

# Sidney Kimmel Medical College

*Information for Prospective Students*

**2024 Cycle**



 **Thomas Jefferson**  
University

# Sidney Kimmel Medical College

## OFFICE of ADMISSIONS

1015 Walnut Street, Suite 110  
Philadelphia, Pennsylvania 19107-5083

Phone: 215-955-6983

Jefferson.edu/SKMC  
SKMC.Admissions@jefferson.edu

The content of this document is provided for the information of the student. It is accurate at the time of printing but is subject to change from time to time as deemed appropriate by the Sidney Kimmel Medical College in order to fulfill its role and mission or to accommodate circumstances beyond its control. Any such changes may be implemented without prior notice and without obligation and, unless specified otherwise, are effective when made.

A Code of Professional Conduct is in place at Sidney Kimmel Medical College at Thomas Jefferson University. It embraces ethical standards of professional conduct for the Thomas Jefferson University community including students, faculty, administrators and house staff. Details of the Code are contained in the Student Handbook.

### Mission Statement

Sidney Kimmel Medical College is committed to: educating physicians who will form and lead the integrated healthcare delivery and research teams of tomorrow; discovering new knowledge that will define the future of clinical care through investigation from the laboratory to the bedside, and into the community; and setting the standard for quality, compassionate and efficient patient care for our community and the nation. We recognize that a diverse community is imperative to achieving excellence in patient care, education, and research. As we carry out our mission, we are committed to the highest standards of professionalism and aspire to be a community of discovery, learning and inclusion.

### Notice of Equal Opportunity

Thomas Jefferson University is committed to providing equal educational and employment opportunities for all persons without regard to race, color, national or ethnic origin, marital status, religion, sex, sexual orientation, gender identity, age, disability or veteran's status. The consideration of factors unrelated to a person's ability, qualifications and performance is inconsistent with this policy. Any person having inquiries or complaints concerning Thomas Jefferson University's compliance with Title VI, Title IX, the Age Discrimination Act of 1975, the Americans with Disabilities Act, or Section 504 of the Rehabilitation Act is directed to contact their Student Affairs Dean or Human Resources – Employee Relations, who have been designated by Thomas Jefferson University to coordinate the institution's efforts to comply with these laws. Any person may also contact the Assistant Secretary for Civil Rights, U.S. Department of Education, Washington, D.C. 20202, or the Director, U.S. Department of Education, Office for Civil Rights, Region Three, Philadelphia, Pennsylvania, regarding the University's compliance with the equal opportunity laws.



## TABLE of CONTENTS

COLLEGE HISTORY .....	4
STUDENT LIFE .....	6
Student Organizations and Societies .....	7
STUDENT CAMPUS RESOURCES .....	8
Library .....	8
Community Engagement .....	8
DIVERSITY AND INCLUSION .....	10
MEDICAL EDUCATION AT JEFFERSON .....	12
The Curriculum: JeffMD .....	14
STUDENT FACILITIES .....	15
Clinical Affiliates .....	15
Housing .....	16
MEDICAL SCHOOL ADMISSION .....	18
Requirements for Admission .....	18
Medical College Admissions Test .....	19
Selection Factors .....	19
Early Decision .....	20
Combined MD/PhD Program .....	20
Dual MD/MPH Program .....	21
Joint MD/MBA-MHA Program .....	21
Cooperative Programs .....	22
Application Procedure .....	22
Application Timetable .....	23
EXPENSES AND FINANCIAL AID .....	23



## A Message from the Dean of Admissions

Welcome! I am thrilled you have chosen Sidney Kimmel Medical College at Thomas Jefferson University for your medical education. With your matriculation at Sidney Kimmel Medical College, you will embark on an extremely challenging yet satisfying career. Your commitment to becoming a physician provides you the privilege of uniquely affecting the lives of others on a regional, national and global level.

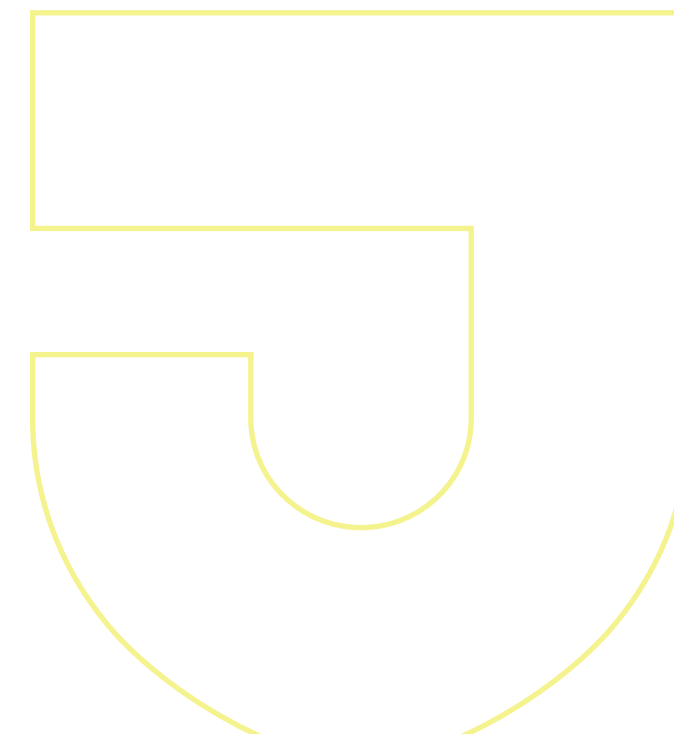
Our JeffMD curriculum will help you meet the challenges facing medicine today in a comprehensive and innovative way. At Thomas Jefferson University, faculty and peers will support you in building upon and expanding your knowledge, skills and perspective. We will empower you to access resources that will promote lifelong learning.

Our remarkable student body is our greatest asset. We admit students who are meaningfully engaged in helping the communities they serve. Our students collaborate inter-professionally and consider the multifaceted aspects of care ranging from medical, social and ethical components and beyond. Our faculty members are deeply committed to the professional and personal development of each student. At graduation, our students have gained not only a tremendous amount of knowledge and skill, but each person has also grown as an individual.

Although it's impossible to completely capture the sense of family that exists here on paper, I firmly believe that Sidney Kimmel Medical Center offers the best clinically balanced medical education under the guidance of extremely caring and compassionate faculty and peers.

I look forward to offering you encouragement along your journey over the next four years and to seeing you achieve your full potential as future physicians.

Alisa LoSasso, MD  
 Vice Dean for Admissions,  
 Chair, Committee on Admissions



## Our History

Founded in 1824, Sidney Kimmel Medical College has awarded more than 31,000 medical degrees and has more living graduates than any other private medical school in the nation.

The medical college is focused on educating physicians who will form and lead the integrated healthcare delivery and research teams of tomorrow. These physicians will discover new knowledge that will define the future of clinical care through investigation from the laboratory to the bedside and into the community; setting the standard for high-quality, compassionate and efficient patient care for our community and the nation.

As one of the oldest institutions of higher education in the nation, Thomas Jefferson University emphasizes the attainment of clinical excellence in its educational programs. It encourages the student body and faculty to commit themselves to lifelong intellectual pursuits. Sidney Kimmel Medical College is the largest private medical school in the country.

Our College is committed to maintaining quality as the hallmark of excellent medical practice and as the cornerstone of the future, both in education and in the provision of health care.

In carrying out its primary objective, that of educating competent physicians, Sidney Kimmel Medical College pursues the goal of excellence by:

- Selecting academically qualified students from diverse racial, ethnic and socioeconomic backgrounds who display caring attitudes and the potential to mature into skilled, compassionate professionals.
- Developing intellectual curiosity in students and imparting scholarly habits that will ensure continued professional growth and development as physicians.
- Instilling in each student the highest standards of professional ethics and social responsibility.



**1824**  
Sidney Kimmel Medical College at Thomas Jefferson University was founded as Jefferson Medical College by Philadelphia physician George McClellan, MD, in partnership with Jefferson College of Canonsburg, PA.

**1826**  
Pennsylvania legislature passed a bill recognizing Jefferson Medical College, allowing the College to award medical degrees.

**1839**  
Jefferson Medical College parted ways with Jefferson College and began operating under its own charter.

**1856**  
Dr. Samuel Gross (class of 1828), considered one of the finest surgeons of his time, returned to Jefferson to lead the Department of Surgery and founded the Jefferson Medical College Alumni Association.

**1877**  
Jefferson opened its first hospital, becoming the second medical school in the country to have an associated hospital.

**1898–1907**  
Due to Jefferson's clinical success the hospital expanded with three new buildings within nine years.

**1958**  
Jefferson's expansion continued; Foerderer Pavilion opened.

**1969**  
Thomas Jefferson University was established and added nursing, health professions and graduate studies to its academic programs.

**1978**  
The Gibbon Building of the hospital opened.

**2014**  
The Sidney Kimmel Foundation made a \$110 million gift to Jefferson Medical College – the largest single gift in the history of Thomas Jefferson University. Through this gift the college was renamed the Sidney Kimmel Medical College at Thomas Jefferson University. The funds support endowment programs to benefit student scholarships, faculty retention, campus facilities, clinical instruction and technology.

**2017**  
Thomas Jefferson University merged with Philadelphia University to form a professional university that dedicates itself to collaborative, transdisciplinary and interprofessional approaches to learning.

**TODAY**  
Thomas Jefferson University includes 10 colleges and 3 schools in diverse disciplines: College of Architecture and the Built Environment; College of Health Professions; College of Humanities and Sciences; College of Life Sciences; College of Nursing; College of Pharmacy; College of Population Health; College of Rehabilitation Sciences; College of Design, Engineering and Commerce – School of Business and School of Design and Engineering; Graduate School of Biomedical Sciences; and Sidney Kimmel Medical College. More than 8,400 students are educated each year across Jefferson. Sidney Kimmel Medical College is the largest private medical school in the country.

## Philadelphia and Campus Life

One of the advantages of attending Sidney Kimmel Medical College is the chance to live in a city with charm and diversity. Thomas Jefferson University's Center City campus is conveniently located within walking distance of theaters, museums, diverse neighborhoods, shopping areas and fine restaurants.

There are diverse cultural opportunities at the college and throughout the Philadelphia area. Within walking distance of campus is the home of the world-famous Philadelphia Orchestra at the Kimmel Center for the Performing Arts and the renowned Philadelphia Museum of Art. Exciting sports events are provided by professional teams such as Philadelphia Flyers hockey, Philadelphia Phillies baseball, Philadelphia Eagles football and Philadelphia 76ers basketball teams. Philadelphia hosts the Mummers' Parade on New Year's Day and a variety of festivals throughout the year including a special celebration each July Fourth. There are also a multitude of community and cultural activities and celebrations.



Sidney Kimmel Medical College at Thomas Jefferson University is proud to be situated near the most historic square mile in America: Independence National Historical Park. A few blocks from campus is the Liberty Bell, the nation's most revered symbol of liberty; Independence Hall, where the Declaration of Independence was adopted; Carpenter's Hall, site of the first Continental Congress; the Betsy Ross House and the National Constitution Center. Visitors to Philadelphia can take advantage of ride-or-walk tours in double-decker buses, or take tours of the historic area.

Travel to and from Sidney Kimmel Medical College and its affiliates is made easy by an efficient network of roadways and public transportation systems. For leisure activities, the southern New Jersey seashore and the Pocono Mountains, are less than a two-hour drive. New York City, Washington, D.C., and Baltimore are also within two hours by car and train.

As part of Thomas Jefferson University, the college is fortunate to be part of the vibrant scientific environment that Philadelphia offers. The area has the second largest concentration of colleges and universities in the country, including five medical schools and many research institutions. As a member of the nation's first urban research park, Jefferson is involved with the other member institutions in cooperative biomedical research that links scientific findings from the laboratory to government and industry.

### Student Life and Engagement

The Office of Student Life and Engagement (OSLE) works to enhance the overall student experience at Jefferson. Overseeing the areas of Student Activities, Student Organization Management and University Orientation, the office works diligently to create quality programs and services for our students. Through these co-curricular and extra-curricular programs and services, the office provides opportunities for student engagement and personal growth. In collaboration with other offices within the Student Affairs Division, OSLE strives to address the holistic needs of students and create an environment of challenge and support, fostering student development.

## Student Organizations & Societies

There are a number of recognized University and Sidney Kimmel Medical College organizations available to students. The Student Organization Directory is published electronically each academic year by the Office of Student Life and Engagement and is your guide to more than 100 organizations. You can access descriptions and contact information for these student organizations by visiting [Jefferson.edu/SOS](http://Jefferson.edu/SOS).

### General Interest

Active Minds  
The Arrhythmias  
Bruce & the FenderBenders  
Chinese Students & Scholars Association  
Cancer Awareness Prevention & Education  
Diversity, Inclusion, and Multiculturalism in Educating Students (DIMES)  
The Diversity Council  
Hands of Hope  
Jefferson APAMSA (Asian Pacific American Medical Student Association)  
Jefferson Arts Organization  
Jefferson Athlete Health Organization  
Jefferson Book Club  
Jefferson Business and Biotechnology  
Jeff Cares for Kids  
Jefferson Chamber Orchestra  
Jefferson Christian Fellowship  
Jefferson Dance Club  
Jeff Earth  
Jeff HOPE (Health Opportunities, Prevention & Education)  
Jeff HEALTH (Helping East Africa Link to Health)  
Jeff ISPOR (International Society for Pharmacoeconomics & Outcomes Research)  
Jeff LGBTQ  
Jeff Reads  
Jeff SAPHE (Student Association for Public Health Education)  
Jeff SAMOSA (South Asian Medical Student Association)  
Jeff SOAR (Students Organized Against Rape)  
Jeff YES (Youth Emergency Services)  
Jeff Medical Interpreters  
Jefferson Muslim Students Association  
Jefferson Physician Scientist Association  
Jefferson Public Health Society  
Jewish Student Association (JSA)  
Jefferson Students for Human Rights  
KIPP Healthy Living  
Latino Medical Student Association  
Louis Pasteur Roman Catholic Society  
Military Medical Students Association  
NoRx Improv

Puentes de Salud at Jefferson  
RISE Philly  
Refugee Health Partners  
Sidney Kimmel Medical College Student Council  
Science Outreach Network  
The Testostertones

### Honor Societies

Alpha Omega Alpha  
Gold Humanism Honor Society  
Hobart Amory Hare Honor Society

### Sports

Badminton Club  
Jefferson Soccer Club  
Jefferson Volleyball Club  
Winter Sports Club

### Professional Organizations

AMA  
American Medical Student Association (AMSA)  
American Medical Women's Association (AMWA)

### Medical Interest Groups

American Geriatrics Society  
Delaware Medical Students Society  
DePalma Orthopaedic Society  
International Medicine Society  
John H. Gibbon, Jr. Surgical Society  
Jefferson Anesthesia Society  
Jefferson Dermatology Society  
Jefferson Emergency Medicine Society  
Jefferson Internal Medicine Society  
Jefferson Medical Oncology Society  
Jefferson Otolaryngology Society  
Jefferson Pediatrics Society  
Jefferson Psychiatry Society  
Jefferson Radiology Society  
Jefferson Urology Society  
OB/ GYN Interest Society  
Med-Peds Society of Philadelphia  
Pathology Student Interest Group  
Physical Medicine & Rehabilitation Society  
Neurosurgery Student Interest Group  
Palliative Care Interest Group  
Peter Amadio, Jr. Family Medicine Interest  
Student National Medical Association (SNMA)  
Thomas Duane Ophthalmology Society  
Veteran's Health Initiative  
Wilderness and Disaster Medicine





## Campus Resources

### Scott Memorial Library

Scott Memorial Library is the campus hub for access to print and non-print resources, study space and learning technologies.

The mission of Scott Memorial Library is to improve lives by strengthening the educational, research and clinical activities of the Thomas Jefferson University and Thomas Jefferson University Hospital communities by:

- Providing up-to-date, knowledge-based information
- Supporting evidence-based decision-making at the point of care
- Providing space and technology resources to support individual and group learning
- Managing computer classrooms and related educational software
- Preserving and promoting Jefferson's rich history and ongoing research

To accomplish this mission, the library staff provides consultation and instruction, as well as access to, and preservation of, knowledge-based resources. Study space and computers for study, learning and collection access are available on the first four floors of the Scott Building. The library also oversees public computers, computer labs and specialty computer classrooms across the Jefferson Center City campus.

Scott Memorial Library is open to the Jefferson community 24 hours a day, seven days a week. The Service Desk on the second floor is staffed 90 hours per week. The library's collection reflects the University's focus on health care, healthcare education, health research and the history of the health sciences. It includes approximately 41,000

books and bound print journals; over 5,000 electronic journal subscriptions; 3,000 plus e-books; the University Archives and significant holdings of rare books dating to the 15th century. The library also has a leisure print book collection and a current selection of popular magazines.

[Library.Jefferson.edu/About/LibraryTour/](https://www.jefferson.edu/About/LibraryTour/)

### Jefferson Humanities & Health

Jefferson Humanities & Health supports student engagement in the arts and humanities to promote essential skills related to health care, including close observation, critical thinking, communication and empathy. Throughout the year, our programs highlight the social contexts of health and wellness, lived experiences of diverse individuals and communities, and self-care for health professionals. Each academic year, Jefferson Humanities & Health explores a thought-provoking theme from a wide range of perspectives.

### Student Community Engagement

We owe a lot to the Greater Philadelphia Area for its more than 300 years of combined community support of Jefferson. We all have individuals in our lives – teachers, mentors, relatives or friends – who have significantly impacted our lives by giving of their time to support us. There is nothing more rewarding than paying that support forward by giving back to the community and making a real difference in the lives of others. Community service is an important part of Jefferson's legacy. It's who we are and what makes us stand out in the communities we serve. We have a variety of service opportunities available to our students – both in Center City and on our East Falls Campus.

### Jefferson Recreation & Fitness

The Jefferson Recreation & Fitness Center, a division of the Office of Student Life & Engagement, is dedicated to creating a safe, supportive and friendly environment where the Jefferson community can acquire the knowledge and behaviors needed to achieve fitness goals, live healthier lives and gain a lifetime appreciation for holistic wellness encompassing all eight (8) of the wellness dimensions.

Each of these wellness dimensions needs attention. Ignoring a problem in one area often leads to problems in another. This may result in a "domino effect." Although balance plays an important part in life, it is nearly impossible to balance eight dimensions at once.

The Center is dedicated to helping our staff and students find their path to wellness. Below, each of the dimensions is briefly discussed to help you better understand why each plays such an intricate role in your well-being.

<https://www.jefferson.edu/life-at-jefferson/health-wellness/fitness.html>

### Office of Student Affairs

Sidney Kimmel Medical College has many resources for students designed to maximize their education experience. The college offers all students the opportunity to meet and work with a wide variety of skilled personnel (e.g., student affairs deans, education specialists, mental health counselors) and to experience a variety of educational material and methods that are designed to support their curriculum throughout medical school.

The Office of Student Affairs and Career Counseling at Sidney Kimmel Medical College is a major support for students. Members of the Dean's staff: Charles A. Pohl, MD;

Kristin L. DeSimone, MD; Leonard Levine, MD; Wayne Bond Lau, MD and Kathryn Traves, MD, are available (located in The College Building, 1025 Walnut Street, Suite 116) to provide individual academic counseling, career counseling, personal advising and assistance with professional development and residency preparation.

Student Affairs is a division of the Office of the Dean of Sidney Kimmel Medical College and serves as the primary liaison for coordinating services and efforts on the behalf of students with faculty, administration and student-health services, including disability services and accommodations requests. The deans work closely with faculty and staff in the Office of Academic Affairs, Office of Diversity and Inclusion, the Wellness Programs and Student Leaders to help ensure student success. The deans and staff in Student Affairs are available by appointment or on a walk-in basis.

[Jefferson.edu/academics/colleges-schools-institutes/skmc/student-resources/student-affairs.html](https://www.jefferson.edu/academics/colleges-schools-institutes/skmc/student-resources/student-affairs.html)

### Learning Societies

Learning Societies are designed to promote a sense of community among medical students outside the classroom by leveraging connections formed within the learning environment. Students in each incoming class are divided into one of four Learning Societies based on their small group assignments in the curriculum. Each Society sponsors social and wellness activities, provides peer mentoring opportunities, offers peer support and elects a representative to Student Council. Through Societies, students from diverse backgrounds can develop shared core values and nurture professional and personal development of their peers.

## Diversity and Inclusion

At Jefferson, we define diversity as “the richness in human differences.” Inclusion is the active engagement with diversity. In an inclusive environment, we value and cherish each other for our unique identities. By doing so, we allow each person to bring their whole selves to work and school and allow them to do what they do best. Our work is in nurturing a climate that fosters belonging, respect and value for all and encourages engagement and connection throughout the institution and community. By doing so, we will have the best chance to provide the best care to populations of patients.

In pursuit of its overall mission, Sidney Kimmel Medical College recognizes that a diverse and inclusive community is imperative in achieving excellence in patient care, education, research and ensuring health equity. When health equity is achieved, everyone has the opportunity to attain their full health potential and no one is disadvantaged from achieving this potential because of their socially determined circumstance.

Given its location in metropolitan Philadelphia, the college is mindful of all aspects of human differences such as socioeconomic status, race, ethnicity, language, nationality, gender, gender identity, sexual orientation, religion, geography, disability and age.

To support its commitment to diversity, equity and inclusion (DEI), Sidney Kimmel Medical College sponsors the Office of Diversity and Inclusion Initiatives (ODII), whose mission is to support, promote and integrate diversity, inclusion and health equity into the fabric of the medical college. To further promote DEI, all aspects of the medical college – faculty affairs, graduate and undergraduate medical education – receive focused attention in the areas of education, environment, recruitment, retention, patient care and community engagement. The office is led by the senior associate dean for Diversity and Community Engagement and the assistant dean for Diversity and Student Diversity Programs.

For students, the ODII works closely with the Sidney Kimmel Medical College Curriculum Committee as well as the education leadership to optimize curricular offerings within the Health Systems Science thread of the JeffMD curriculum on topics such as unconscious bias, micro-aggressions, social determinants of health and structural competency. ODII also supports student affinity groups and activities that enhance multicultural awareness and cultural sensitivity and promotes diversity within the community. Examples of activities have included the Student National Medical

Association (SNMA) Annual Medical Education Conference (AMEC), the Latino Medical Students Association (LMSA) regional and national conferences, the Philadelphia Gay Pride Parade, Black Heritage Month and Diversity Week. ODII sponsors the Medical Spanish Program, a four-year longitudinal program aimed at developing Spanish-speaking physicians who can provide care to an often-underserved population.

### Committee on Diversity and Inclusion

Sidney Kimmel Medical College’s Diversity, equity and inclusion (DEI) efforts are driven by the Committee on Diversity and Inclusion. The Committee is comprised of students, resident physicians, faculty, department chairs and senior administration. The Committee is charged with determining the course of DEI within the medical college. It assesses the status and effectiveness of initiatives within the student, resident and faculty communities of the college, makes recommendations regarding initiatives, policies and resources needed to achieve desired outcomes, and is charged with assuring the implementation of its recommendations.

[Jefferson.edu/academics/colleges-schools-institutes/skmc/diversity.html](http://Jefferson.edu/academics/colleges-schools-institutes/skmc/diversity.html)

## Community Outreach and Other Activities

### Community Service

Opportunities for medical students to immerse themselves in community service are plentiful. Our students participate in community service from patient care and education at local high schools to medical care and patient advocacy at five area homeless shelters.

From the first to the fourth year, students are invited to participate in Jeff HOPE (Health Opportunities for Prevention and Education), a student-initiated program that provides medical care and patient advocacy to Philadelphia’s homeless, under supervision of the Departments of Medicine and Family and Community Medicine. The year-round program includes a seminar series, as well as on-site, interdisciplinary clinical experience for students in all four years of medical school.

Refugee Health Partners provides opportunities for students to participate in the care of local refugee populations through community outreach programs including health fairs, health education classes and clinical care endeavors.



Students interested in volunteering with children and adolescents in the community can do so through multiple student organizations such as JeffMentors, JeffTEACH and JeffYES. Through these activities, students develop a greater understanding of the needs of underserved youth while serving as positive role models.

### Global Health Outreach

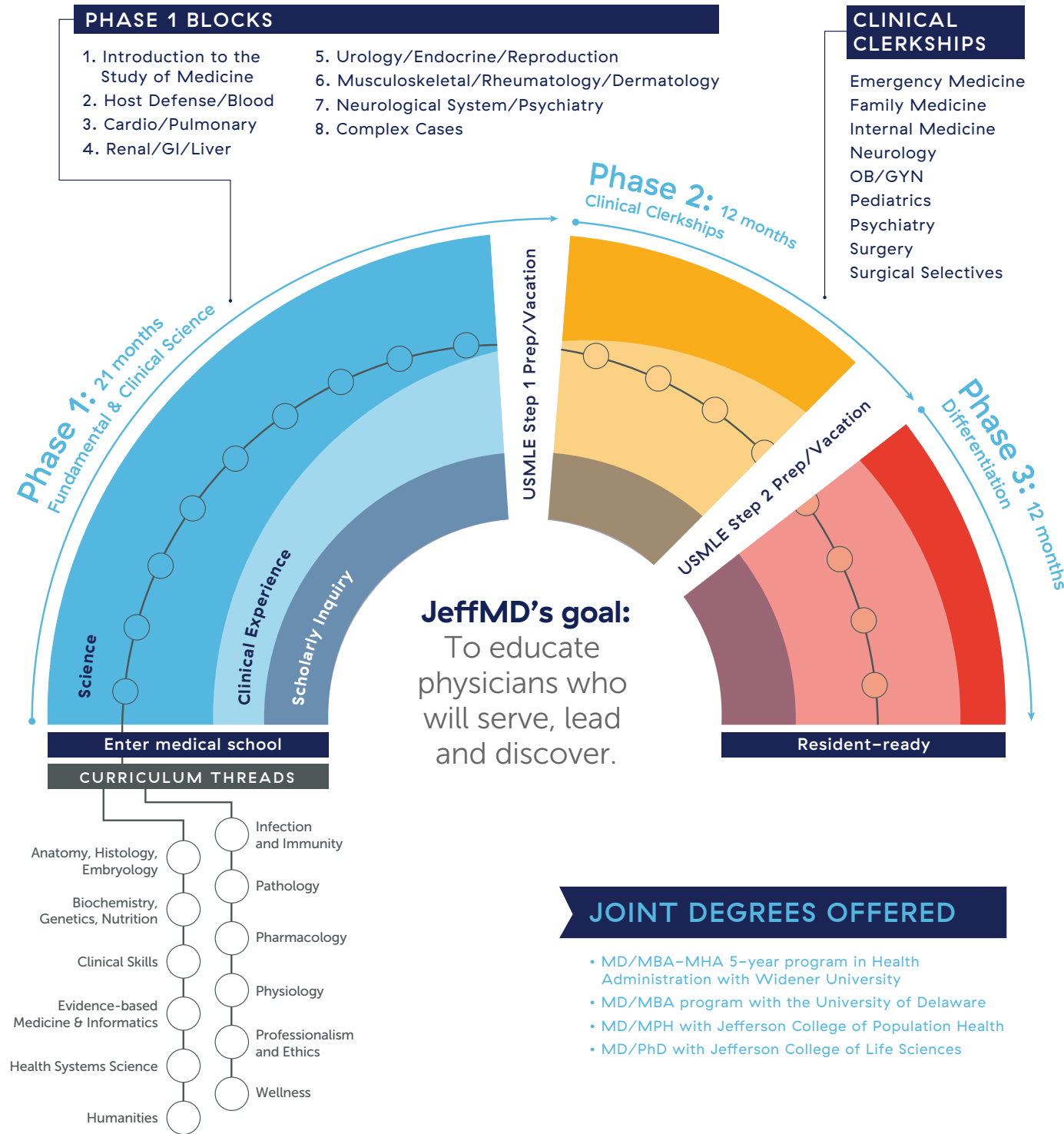
Jefferson offers students a wide array of opportunities to experience the world and learn about another culture and place for credit as well as non-credit Global Enrichment Opportunities (GEOs). With more than 30 options in 40+ countries, we have an extensive portfolio of options to meet every student’s need and schedule.

The Office of International Affairs (OIA) is the resource for Center City students wishing to apply for the Foerderer Award for International Study. The Award helps students defray the cost of an international study experience lasting three to 10 weeks.

The office also maintains the Travel Registry for Center City students, and can provide information about programs available to students. Working with the Centers for Global Engagement, OIA offers guidance on global study opportunities.

[Studyaway.Jefferson.edu](http://Studyaway.Jefferson.edu)  
Office: 215-503-4335  
E-mail: [uia@jefferson.edu](mailto:uia@jefferson.edu)

# JeffMD Curriculum Overview



## Medical Education

### JeffMD: A Curriculum for Clinical Excellence

As a student, you will contribute to Sidney Kimmel Medical College's proud tradition of excellence. You will have many opportunities to develop as a leader in your profession – in clinical settings, research labs and community service. JeffMD, our curriculum, will support you by giving you sound fundamentals, combined with elements you can customize to your interests. You will find strong integration of clinical experience and science instruction throughout your four years here. In keeping with modern medical practice, you will gain the analytical skills to evaluate changing data and treatment options, sharpened emotional intelligence and comfort working in multi-specialty teams. The study of medicine has always been one of the most deeply satisfying, exciting – and challenging – ways to develop your talents. JeffMD deepens all these truths at Sidney Kimmel Medical College.

## What Drives JeffMD?

### Mission

- To educate physicians who will serve, lead and discover.

### Values

- Put the patient first.
- Foster respect and humility.
- Insist on integrity and personal responsibility.
- Develop a passion for learning, collaborative practice and continuous reflection.

### Benefits of JeffMD

**A patient-centered perspective.** Faculty and team members will constantly ask you to examine the doctor you are becoming through a patient's lenses: "What do my patients need me to know, and how do they want me to act?"

**Early clinical experience.** Soon after matriculation, you will find yourself in contact with patients, developing clinical skills and knowledge while contributing to patient care in





ways both meaningful and appropriate to your early stage in medical school. As your knowledge and skills grow, so will your involvement in patient care.

**Contextual learning.** A constant interplay among foundational science, development of clinical skills and knowledge, and definition of a professional persona will create context and relevance for new learning.

**Critical thinking.** Independent projects, which you will be able to shape with input from a faculty mentor, will hone your critical-thinking skills. During time built into your schedule, you might choose to focus your individual research on medical education, population health, ethics, health systems, bench science or an area of humanities.

**A range of instructional formats.** You will do much of your learning in small groups that give teams responsibility for problem-solving. Lectures, simulation, individual study and reflection will also remain important parts of the instructional portfolio.

**Assessments.** Tests that depend on memorization will be less frequent than was historically the case. Faculty evaluations of your readiness will play a larger role in assuring you have the competencies to move to a new stage in the curriculum.

**Earlier declaration of specialty interest.** During the last phase of the curriculum, you will have the option of focusing your coursework in a specialty you choose to strengthen your preparation for residency and other post-graduate experiences.

## How JeffMD Works

### Phase 1

Students focus on establishing the foundational knowledge and skills needed in all areas of practice. While basic science is the primary concern, students also participate in clinical activities that engage them in seeing the complex interplay of medical realities, life circumstances and resources for care that contribute to effective options for prevention or treatment. In this phase, students identify the first question they want to explore in individual inquiry and begin work with a faculty mentor. At the end of the first year of studies, students have a break that can be used for vacation, scholarly inquiry or experiences abroad.

### Between Phases 1 and 2

Two months without scheduled classes create time for students to prepare for and take Step 1 of the U.S. Medical Licensing Examination (USMLE) and to take additional vacation.

### Phase 2

Students begin their clinical clerkships, but also continue to learn the science associated with the issues they are seeing in their rotations and to conduct independent inquiry.

### Phase 3

Students customize a program of basic science, clinical skills training, and individual inquiry to advance their preparation for a specialty of their choice. If students find their first choice does not retain their interest for a career, continued work on core competencies throughout this phase will make it possible to change direction. Phase 3 builds in the flexibility for students to arrange their electives, study for Step 2 of the USMLE, and take a vacation in time frames that vary by individual. To learn more about JeffMD, please visit [Jefferson.edu/JeffMD](http://Jefferson.edu/JeffMD). You can also contact us with questions at [jeffmd@jefferson.edu](mailto:jeffmd@jefferson.edu).

## Student Facilities

### Thomas Jefferson University Hospital

Located at 111 South 11th Street, Philadelphia, Thomas Jefferson University Hospital has a long history of providing the highest level of compassionate care to our neighbors. Within the Hospital and surrounding buildings, Jefferson's expert physicians maintain patient offices.

The Gibbon Building, located at 111 South 11th Street, is home to a variety of patient services and amenities, including the Atrium cafeteria, our gift shop, the surgical family waiting area, the Chinese Health Information Center and more.

The Bodine Center for Radiation Therapy/Sidney Kimmel Cancer Center at Jefferson (on the corner of 11th and Sansom Streets) is the Philadelphia region's busiest radiation oncology center. The Center focuses on the collaborative efforts of highly accomplished radiation oncologists, surgeons, medical oncologists and other specialists in leading-edge cancer treatments.

### Clinical Affiliates

An excellent patient mix is provided through rotations at Thomas Jefferson University Hospital and at several excellent affiliate community hospitals and Veterans Medical and Regional Office Center. There are numerous hospitals affiliated with the Sidney Kimmel Medical College that provide clinical training for students and residents.

Clinical training of our students is directed by faculty at affiliated hospitals located in suburban Philadelphia, northeastern, central and western Pennsylvania, as well as in Delaware and New Jersey.

Most clinical affiliates are within 60 miles of Jefferson's center city campus. Students can access sites via personal vehicle or public transportation.

Excellent opportunities are available for basic and clinical research at Sidney Kimmel Medical College and both University and affiliated hospitals.

Our graduates are well prepared for future careers having received a well-rounded education and clinical experience directed by an excellent faculty from diverse backgrounds including university, community and Veterans Administration Medical Centers.

### Jefferson Affiliate Hospitals

- Jefferson Abington Hospital
- Nemours/Alfred I. DuPont Hospital for Children
- Bryn Mawr Hospital
- Jefferson Bucks Hospital
- Christiana Care
- Crozer Health System
- Excelsa Health Latrobe Hospital
- Jefferson Frankford Hospital
- Lankenau Medical Center
- Jefferson Methodist Hospital
- Morristown Medical Center (Atlantic Health System)
- Overlook Medical Center (Atlantic Health System)
- Thomas Jefferson University Hospital
- Jefferson Torresdale Hospital
- Virtua Health
- Wilmington Veterans Affairs Medical Center
- WellSpan York Hospital

[Jefferson.edu/content/dam/academic/skmc/student-resources/Affiliation-Guide-2023-2024%20web.pdf](http://Jefferson.edu/content/dam/academic/skmc/student-resources/Affiliation-Guide-2023-2024%20web.pdf)



### Housing and Residence Life

The Office of Residential Life provides a living, learning environment that promotes a holistic approach to the residential experience. All three residence halls are centrally located on campus. Barringer, Orlowitz and Martin Halls are safe and comfortable facilities in an atmosphere that contributes to students' academic success. Living on campus will enhance your experience at the University – on campus residents have the opportunity to meet students outside of their academic programs and benefit from the close proximity to classes and the hospital.

#### Barringer Residence

The Barringer Residence offers a variety of unfurnished apartments ranging from studio-style apartments to three-bedroom apartments.

#### Martin Residence

The Martin Residence Hall offers community style living (community bathrooms, lounges, and kitchens), while living in a private furnished room.

#### Orlowitz Building

The Orlowitz Residence offers a variety of unfurnished apartments ranging from one-bedroom to three-bedroom apartments.

Virtual Floor plans and other details regarding each residence are available for you to review by visiting: [Jefferson.edu/university/campus-life/housing.html](https://Jefferson.edu/university/campus-life/housing.html).

#### Off-Campus Housing

The Office of Residential Life and Thomas Jefferson University are not affiliated with any off-campus housing sites, nor is any particular property endorsed or recommended. Jefferson students and employees should perform due diligence to ensure that the off-campus property they are considering renting is insured and meets basic safety standards. If you are interested in off-campus options, please visit the off-campus housing site: [Offcampus.Jefferson.edu](https://Offcampus.Jefferson.edu).

If you would like to set up a virtual or in person meeting, please email [University.Housing@Jefferson.edu](mailto:University.Housing@Jefferson.edu).



## Sidney Kimmel Medical College

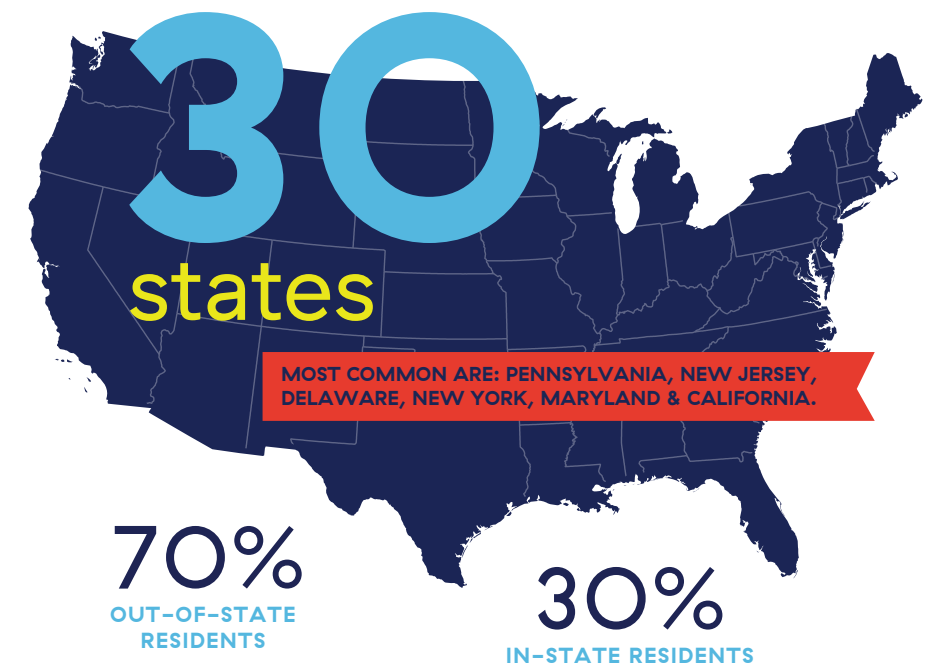
## STUDENT FACT SHEET

### 2023 Incoming Class

**10,922**  
AMCAS APPLICANTS

**4%**  
OF APPLICANTS  
OFFERED ACCEPTANCE

**272**  
STUDENTS ACCEPTED  
TO FIRST YEAR CLASS



**53%**  
FEMALE

**46%**  
MALE

**3.80** AVERAGE TOTAL GPA

AVERAGE SCIENCE GPA **3.77**

**514** AVERAGE MCAT

**105**  
GRADUATE AND  
UNDERGRADUATE  
SCHOOLS  
REPRESENTED

#### AGE RANGE OF MEDICAL STUDENTS

**66.9%**  
20-23

**26.2%**  
24-26

**6.9%**  
27-37

## Medical School Admission

The medical profession is a career for those prepared for a lifetime of service to the ill, regardless of diagnosis. It has as its objective the development of professionals prepared to adhere to the highest standards of conduct and behavior asked of few others in our society.

The Medical College Admission Test and a baccalaureate degree from an accredited college or university in the United States or Canada are required, unless the student is being admitted through a Sidney Kimmel Medical College-approved scholars' program with modified requirements. Credit for foreign course work must be validated and/or accepted by an accredited U.S. college or university. It is preferable to have courses graded by the traditional grading system rather than by pass/fail grades.

The college concurs with the concept that certain minimum academic and technical standards are essential for the successful completion of a medical education and for the granting of the degree of Doctor of Medicine. Accepted applicants requiring special accommodations should contact the admissions office as early as possible.

Applicants should read and understand the technical requirements for admission outlined in this brochure and be able to meet them, with or without reasonable accommodations. If there are any questions regarding the technical standards, contact the Office of Admissions for clarification.

Contact the Admissions Office:  
215-955-6983  
SKMC.admissions@jefferson.edu

### Technical Standards – Required for Admission

As requirements for admission, promotion and graduation, a candidate for the MD degree at SKMC must possess the abilities and skills to meet the technical standards listed below, with or without accommodations:

1. The ability to analyze, synthesize and solve problems, and reach diagnostic and therapeutic judgments.
2. Sufficient use of the senses of vision and hearing and somatic sensation necessary to perform a physical examination using observation, palpation, auscultation and percussion and the ability to execute motor movements reasonably required to provide both general patient care and emergency treatment.
3. The ability to relate to patients and to establish sensitive, professional relationships with patients.

4. The ability to work as an effective team member of the healthcare team.
5. The ability to communicate in writing and verbally with patients and medical colleagues with accuracy, clarity and efficiency in both routine and emergency conditions. Accommodation through use of a trained intermediary or other communications aide may be appropriate when this intermediary functions as an information conduit.
6. The ability to learn and perform certain laboratory and diagnostic procedures.
7. The ability to use good judgment in the assessment and treatment of patients.
8. The ability to accept criticism and to respond by appropriate modification of behavior.
9. No infectious disease that would prevent the performance of essential clinical activities required to complete the curriculum.
10. The perseverance, diligence and consistency to complete the medical school curriculum and to enter the independent practice of medicine.

[Jefferson.edu/academics/colleges-schools-institutes/skmc/admissions/admitted-students.html](http://Jefferson.edu/academics/colleges-schools-institutes/skmc/admissions/admitted-students.html)

### Course Requirements

A strong preparation in the sciences basic to medical school studies is advised. A variety of college course formats and combinations, including biology, general and organic chemistry, and physics are recommended. Courses taken to meet the basic requirements should be, in general, comparable to courses accepted for concentration in these disciplines. It is recommended that courses taken are supplemented by laboratory experiences.

Students may take upper-level science courses out of educational interest or to fulfill the requirements of their major. Taking additional science courses that cover material taught within the medical school curriculum is not useful to gain admission. If advanced placement credits in required subjects are submitted, additional upper-level courses are encouraged. Breadth of education is expected.

The pursuit of some discipline in depth is encouraged. A successful medical student must effectively acquire, synthesize, apply and communicate information. These are skills that can be developed through a great variety of academic disciplines. Studies in the humanities, the social

and behavioral sciences and the development of effective writing skills are strongly suggested.

Honors courses and independent study or research are encouraged to explore, in depth, an area of knowledge and to provide scholarly experience that will facilitate a lifelong habit of self-education. All academic requirements to attain a bachelor's degree must be completed prior to matriculation.

### Medical College Admissions Test

All MD and MD/PhD applicants are required to submit the results of the Medical College Admissions Test (MCAT). The test should be taken no more than three years prior to the time of application. The best time to take the test is in the spring – prior to applying – so that your scores are available when you apply. Regular applicants must take the MCAT no later than the last sitting in September. All applicants must request that their MCAT scores be sent to the Admissions Office at Sidney Kimmel Medical College. For registration materials, contact your premedical advisor or the MCAT Program Office:

Association of American Medical Colleges (AAMC)  
655 K Street, NW  
Suite 100  
Washington, DC 20001-2399  
202-828-0600

[students-residents.aamc.org/register-mcat-exam/register-mcat-exam](http://students-residents.aamc.org/register-mcat-exam/register-mcat-exam)

### Sidney Kimmel Medical College Selection Factors

From an applicant pool of approximately 10,000, the Committee on Admissions each year selects a class of 272 students. In addition to the applicant's academic profile, we look favorably on applicants who have demonstrated strong interpersonal and intrapersonal competencies, including a service orientation, cultural competence, teamwork skills, strong oral communication, ethical responsibility to self and others, reliability and dependability, resilience and adaptability and the capacity for improvement.

During each application cycle, the Committee on Admissions interviews approximately 800 applicants. Interview invitations are sent to applicants between July and February. The interview serves several purposes:

- Information can be verified and clarified
- The applicant can explain unique aspects of the application
- The applicant can become better acquainted with the medical school
- Intellect, ability to communicate, personal qualities and motivation can be assessed

The interview also aids in deciding which applicants will most likely benefit from the college's program and is a requirement for acceptance. A student who has previously attended another medical school and failed academically or been dismissed for unsatisfactory conduct will not be considered for admission.

Our college is committed firmly to the educational goal of enrolling a diverse body of talented students who will reflect the character of the American people whose health needs the medical profession must serve. Essential in meeting this goal is the recruitment and matriculation of students from groups that are underrepresented in medicine. In addition, recognizing that a diverse environment as well as a diverse educational experience enhances the education of all of its learners and leads to an expertise in providing patient care to a diverse patient population, students who are financially disadvantaged, first-generation college-goers or lesbian, gay, bisexual, transgender and those questioning their sexual identity are also a focus of recruitment efforts. The Commonwealth of Pennsylvania enacted a new Medical Practice Act in 1985 (Act 112 of 1985) that specifies the qualifications for a license to practice medicine from the Pennsylvania Board of Medical Education and Licensure.

The Board will not issue a license to an applicant who has been convicted of a felony under the act of April 14, 1972 (P.L. 223, No. 64), known as The Controlled Substance, Drug, Device and Cosmetic Act, or of an offense under the laws of another jurisdiction which, if committed in this Commonwealth, would be a felony under the Controlled Substance, Drug, Device and Cosmetic Act. Under most circumstances, admission will not be offered to an applicant with a felony conviction.

Final Acceptance for Admission to Sidney Kimmel Medical College is conditional on the following:

1. Satisfactory completion of current enrollment.
2. Meeting all entrance requirements, including all academic and technical standards of the college.
3. Satisfactory health.
4. Agreement to comply with the rules and regulations of the Thomas Jefferson University and code of professional conduct.
5. Agreement to accept curriculum changes as approved by the faculty and tuition changes as determined by the Board of Trustees.
6. A successful Criminal Background check.

## Pre-Application Programs to Consider

### Early Decision

Sidney Kimmel Medical College participates in the Early Decision Program (EDP). Students participating in this program must submit an application and all credentials no later than August 1st of the application year to AMCAS. A decision will be made concerning each application by October 1st so that candidates who are not offered places in the class have adequate time to seek acceptance to other medical schools. The EDP program should be a consideration by those applicants who strongly desire to attend Jefferson and have an excellent academic record.

### Combined MD/PhD Program

Students in the MD/PhD Program take courses at both Sidney Kimmel Medical College and Jefferson's College of Life Sciences. Studies begin in Sidney Kimmel Medical College. Students complete research rotations before and/or during vacations in Phase 1. Current Topics in Translational Biomedical Research: (1 credit each semester). After completing Phase 1 in Sidney Kimmel Medical College and the USMLE Step 1, students select a thesis mentor and PhD Program in the College of Life Sciences where they complete study for the PhD.

Credits are awarded for Phase 1, accounting for a substantial number of the credits required for the PhD thesis. In addition, six didactic credits and 20 research credits are awarded for MD/PhD specific coursework completed during Phase 1. Thus, MD/PhD students should be able to fulfill most remaining coursework early, providing significant time for bench research. Some courses are required of MD/PhD students in all PhD programs and are listed below. Other requirements are program specific and listed with the appropriate PhD Program. As much of the remaining coursework as possible should be completed during the first year in the College of Life Sciences.

During the second, third and fourth years of graduate education, each student will focus on the maintenance and continued refinement of the student's clinical skills through attendance and participation in clinical rounds. Attention will be given to the development of the student's interviewing skills and their ability to write a history and physical. To fulfill the requirements, the student can choose among or use some combination of the following: JeffHOPE Clinics; Internal Medicine morning rounds, which consist of formal physical diagnosis rounds and morning report; participate in resident-led clinical skills sessions as arranged by the Jefferson Physician Scientist Association; choose preceptors in different clinical areas

in order to gain a better exposure to the patient population and lifestyle of these various specialties.

The PhD degree is usually completed within four years, although there is the possibility of a fifth year if requested by the student and mentor. In any event the defense of the PhD thesis must be completed before returning to Sidney Kimmel Medical College. After completing the PhD degree, the student returns for Phase 2 and Phase 3; completing clinical studies. The dual MD/PhD degree is awarded at Commencement following Phase 3.

### DIMER Program

The Delaware Institute of Medical Education and Research created the DIMER Program to provide an opportunity for Delaware residents to obtain a high-quality medical education. DIMER currently has four partners that keep this program thriving: Delaware Higher Education Office; Christiana Care Health System Delaware Branch Campus; Philadelphia College of Osteopathic Medicine; and Sidney Kimmel Medical College. As the medical school for the state of Delaware, each year the college reserves up to 20 places in the incoming class specifically for Delaware residents. Applicants must be legal residents of Delaware and meet all of our prerequisite requirements. Sidney Kimmel Medical College is the official medical school of Delaware.

### The Physician Shortage Area Program

The Physician Shortage Area Program (PSAP) admits students from rural areas and small towns who are committed to practicing in a similar area. Priority will be given to those planning to practice family medicine, although applicants planning other specialties, or unsure of their future specialty, will also be given consideration. Since the program began in 1974, we have trained more than 400 PSAP physicians, and the program has received national recognition in the *New England Journal of Medicine* and the *Journal of the American Medical Association*. Special consideration for admission and financial aid is given to students who have grown up in, or have substantial ties to a rural area or small town, and are also committed to practicing in a similar location. Priority is given to Pennsylvania and Delaware residents, and to applicants enrolled at Allegheny College, Bucknell University, Franklin & Marshall College, Indiana University of Pennsylvania, Pennsylvania State University, the University of Delaware and the University of Scranton.

All incoming PSAP students are provided with an advisor in the Department of Family and Community Medicine at the beginning of medical school. These advisors provide

curricular and career guidance, and are available as mentors throughout all four years. PSAP students also take at least one of their required Phase 2 clinical clerkships in a smaller community outside the Philadelphia metropolitan area (currently the family medicine clerkship at Latrobe Area Hospital, or the family medicine, internal medicine, general surgery, or obstetrics/ gynecology clerkships at York Hospital). They are also encouraged to take at least one of their Phase 3 clinical rotations or electives in a rural area or small town, and are given priority to take their outpatient sub-internship in family medicine at a preceptorship in a rural location. Upon graduation, PSAP students take a residency of their choice, and are then expected to practice in a rural area or small town, preferably in Pennsylvania or Delaware.

Questions should be directed to:  
215-955-6983  
SKMC.Admissions@jefferson.edu

## Post-Matriculation Programs to Consider

### JeffBEACON Program

The JeffBEACON Program promotes health equity for disadvantaged urban communities in Philadelphia. This program will train students to serve the needs of local communities, involve communities in research, and incorporate the expertise of community leaders in improving health. This program will provide training on delivering non-biased, culturally appropriate, trauma-informed care and seek to increase the diversity of health care professionals to better reflect the communities they serve. This co-curricular program is led by faculty members experienced in community-based primary care. Interested students may apply in the fall of their first year at Sidney Kimmel Medical College.

### Dual MD/MPH Program

The MD/MPH dual degree option is open to students who are currently enrolled at Sidney Kimmel Medical College.

Students usually complete two rotations of Phase 3 before stepping out of medical school to complete MPH coursework. Students return to Phase 3 at Sidney Kimmel Medical College the following July. Accepted students may also defer their medical school start for one year to complete an MPH.

MD/MPH students from Sidney Kimmel Medical College begin in the fall trimester (September) and finish their MPH coursework in the summer trimester (June). Both degrees (MD and MPH) are conferred the following May.

The Joseph Gonnella Scholarship covers a portion of MPH tuition and fees and is available to eligible students.



Physicians with an MPH degree are prepared to make a difference at the patient's side and in the community. The degree provides advanced training in research and education and informs clinical practice with underserved populations. Physicians with an MPH degree assume leadership positions in the healthcare setting, in state and local public health departments, non-governmental health organizations and in the global context.

More information about the MPH program is available at [Jefferson.edu/academics/colleges-schools-institutes/population-health/degrees-programs/public-health/Pathways/dual-degrees/MDMPH/md-mph-skmc.html](https://www.jefferson.edu/academics/colleges-schools-institutes/population-health/degrees-programs/public-health/Pathways/dual-degrees/MDMPH/md-mph-skmc.html).

### Joint MD/MBA-MHA Program in Health Administration

Recognizing that vast economic, organizational and political changes have dramatically changed the practice of medicine



and transformed it into a huge industry, Sidney Kimmel Medical College has sought to prepare future graduates for leadership roles in this enterprise.

We offer a joint five-year MD/MBA (and MHA) Program to highly motivated students as a result of an educational partnership with Widener University in Chester, PA, approximately 25 minutes from the main Thomas Jefferson University Campus. The program includes opportunities for research, administrative field placements and potential fellowship support.

Interested students should contact David B. Nash, MD, MBA, Founding Dean Emeritus and Dr. Raymond C. and Doris N. Grandon Professor of Health Policy, College Population Health, preferably during the interviewing process, to more fully explore the requirements, prerequisites and other detailed aspects of this unique joint program.

David.Nash@Jefferson.edu

### Transfer Students

A limited number of applications for transfer into the third-year class may be considered (for compelling reasons) from students who are currently enrolled and satisfactorily completing their first two years in an LCME accredited medical school. Transfer students must have passed the United States Medical Licensing Examination Step 1. Applications for transfer should be requested in writing after December 1.

### Information for High School Students

#### Penn State Accelerated BS/MD Program

The Penn State Accelerated Program, started in 1963, is a cooperative BS/MD program run by Sidney Kimmel Medical College and Pennsylvania State University. We jointly select

qualified high school seniors to earn both their BS and MD degrees in seven years. Students spend three years at Penn State’s University Park campus and four years at Sidney Kimmel Medical College. Students receive their BS degree from PSU after passing their first year at Sidney Kimmel Medical College and their MD degree after four years at the college.

#### University of Delaware Medical Scholar Program

The Medical Scholars Program (MSP), an educational collaboration between the University of Delaware and Sidney Kimmel Medical College, links college to medical school with an early admission process for qualified students. The first group of MSP students matriculated at Sidney Kimmel Medical College in 1994.

### Application Procedure

All Applications to Sidney Kimmel Medical College are submitted via the AMCAS application website. The application is available online only via the AMCAS Web site (aamc.org/students/amcas).

On receipt of the verified AMCAS application, the college will e-mail notification of receipt. Also included will be instructions for completing the Sidney Kimmel Medical College online secondary application with online payment.

The Committee on Admissions will begin reviewing the application when all supplementary materials have been received, including:

1. The Sidney Kimmel Medical College Secondary Application
2. The non-refundable \$80 application fee
3. MCAT scores
4. Letters of recommendation required to complete the application.

Letters of recommendation are to be transmitted via AMCAS only. Please review the AMCAS letter transmission policy at [students-residents.aamc.org/applying-medical-school-amcas](https://students-residents.aamc.org/applying-medical-school-amcas).

We prefer to receive a recommendation from a pre-professional committee. If there is no such committee, letters should be provided by individual faculty members (one letter each from biology, chemistry, physics and humanities, if possible). Applicants who have been involved in graduate programs are encouraged to provide additional letters from their graduate schools. The deadline for the receipt of letters of recommendation is January 1.

It is the applicant’s responsibility to see that the application is complete (the non-refundable \$80 application fee paid, and the required letters of recommendation received) by the specified deadline. It is also the applicant’s responsibility to provide a current address and a telephone number throughout the application processing period.

### Standard Application Procedure

Timetable of Application and Acceptance for the First-Year Class

Filing of AMCAS application deadline:

Early Decision	August 1
MD/PhD	October 15
Regular MD	November 15

Receipt of supporting materials deadline:

Early Decision	August 1
MD/PhD	November 1
Regular MD	January 1

Secondary application fee: \$80 (non-refundable)

Acceptance decision to applicants:

Early Decision	October 1
All Other	October 15, until class roster is complete

Applicant’s response to acceptance offer:

Maximum time – two weeks

Deposit to hold place in class (applied to tuition)

\$100, due no later than April 30.  
Deposit refundable prior to April 30.

The commit to enroll date is June 20, 2024

### Deferred Admission

A deferred admission option is available to all students who are accepted. Students wishing to apply for deferral should write to the Dean of Admissions stating the reasons for deferral and their plans for the subsequent year(s).

The Committee on Admissions encourages students to take advantage of intellectually and personally rewarding opportunities. Requests for deferred admission must be received no later than May 1.

### Expenses and Financial Aid

#### Expenses for the Academic Year 2023–2024

Tuition and Fees	\$63,366
Library and Tech Fees	\$1,023
Books and Supplies	\$1,060
Instruments	\$249
Housing	\$15,422
Meals	\$5,005
Transportation	\$500
Medical/Dental (Out of pocket if purchased)	\$450
Estimated Health Insurance	\$5,000
Miscellaneous	\$1,760
Estimated Loan Fees	\$476
<b>Total</b>	<b>\$94,311</b>

### Expenses

The Board of Trustees reserves the right to amend or add to the regulations concerning fees and method of payment, and to make such changes applicable to present as well as future students in the college.

### Financial Aid

The primary responsibility for financing the cost of medical education rests with the student and family. However, it is recognized that increasing numbers of people are unable to meet medical school costs without some type of assistance. The demonstration of need is the key factor in all financial aid awards. Determination of need is based upon confidential analysis of information provided by the student and family to the Free Application for Federal Student Aid (FAFSA) Service.

Once need is established and the resources of the student and family are clearly identified, the student is directed to obtain a minimum of \$10,000 in the Federal Direct Unsubsidized Loan. If need exists beyond this amount, Thomas Jefferson University will attempt to meet a portion of this need from the university’s loan and grant/scholarship funds. The University Office of Student Financial Aid also offers student information about the Federal Direct Graduate PLUS Loan private educational loan programs, and scholarships and loans offered through public and private agencies.



On or about November 15th, Financial Aid Application information is e-mailed to all accepted students. Students accepted after this date will be sent an application e-mail within two weeks of their acceptance date. Instructions for accessing the online financial aid application are included with this communication. Please note that only accepted students are able to access the online financial aid application. Late accepts should file applications within two weeks of acceptance.

Financial Planning Seminars are held throughout the year. A seminar for freshmen is held during orientation to acquaint incoming students with effective budgeting and debt-management techniques. In addition, the University Office of Financial Aid offers a seminar series, "Building a Financial Plan for School and the Future," which covers topics of debt management, personal budgeting, insurance planning, mortgages, investment planning and factors to consider before signing a professional contract. Students are encouraged to contact the University Office of Student Financial Aid.

**University Office of Financial Aid**  
 1015 Walnut Street, Suite 115, Curtis Building  
 Philadelphia, Pennsylvania 19107  
 215-955-2867  
[financial.aid@jefferson.edu](mailto:financial.aid@jefferson.edu)  
[Jefferson.edu/financial\\_aid](http://Jefferson.edu/financial_aid)

**Medical Insurance**

Health insurance is required for all students attending Thomas Jefferson University. Jefferson offers a comprehensive health plan designed specifically for students. If not covered by an equivalent policy of a parent or spouse, students are required to purchase the coverage offered by Jefferson. Coverage through the student plan will be billed in its equal halves, payable in July and December. Coverage through Jefferson's student policy is also available for dependents at an additional cost. Optional dental insurance is also available.

Sidney Kimmel Medical College provides a disability plan that pays a monthly benefit in the event of disability due to a sickness or injury.

# Sidney Kimmel Medical College

## RESIDENCY MATCH RESULTS

Sidney Kimmel Medical College Class of 2023

LOCATION	STATE	SPECIALTY	NUMBER of STUDENTS
Albert Einstein COM/Jacobi Medical Center	NY	DIAGNOSTIC RADIOLOGY	1
Albert Einstein COM/Jacobi Medical Center	PA	MEDICINE - PRELIM	2
Albert Einstein COM/Jacobi Medical Center	PA	ORTHOPAEDIC SURGERY	1
Albert Einstein COM/Jacobi Medical Center	PA	PSYCHIATRY	1
Albert Einstein COM/Jacobi Medical Center	PA	SURGERY - PRELIM	1
Albert Einstein COM/Jacobi Medical Center	PA	UROLOGY	1
Albert Einstein COM/Jacobi Medical Center	PA	MEDICINE - PRELIM	1
Bayhealth Medical Center	DE	INTERNAL MEDICINE	1
Baylor University Medical Center, Houston	TX	MEDICINE - PEDIATRICS	1
Beth Israel Deaconess Medical Center	MA	ANESTHESIOLOGY	2
Beth Israel Deaconess Medical Center	MA	INTERNAL MEDICINE	1
Beth Israel Deaconess Medical Center	MA	OTOLARYNGOLOGY	1
Beth Israel Deaconess Medical Center	MA	NEUROLOGY	1
Beth Israel Deaconess Medical Center	MA	PSYCHIATRY	1
Boston University Medical Center	MA	DERMATOLOGY	2
Boston University Medical Center	MA	FAMILY MEDICINE	1
Boston University Medical Center	MA	INTERNAL MEDICINE	1
Boston University Medical Center	MA	ORTHOPAEDIC SURGERY	1
Brigham & Women's Hospital	MA	NEUROLOGY	1
Brigham & Women's Hospital	MA	PATHOLOGY	2
Brown University/Rhode Island Hospital	RI	PEDIATRICS	1
California Pacific Medical Center	CA	PSYCHIATRY	1
Campbell University	NC	TRANSITIONAL	1
Cedars-Sinai Medical Center	CA	NEUROLOGY	1
Children's Hospital of Philadelphia	PA	PEDIATRICS - LEAP	1

LOCATION	STATE	SPECIALTY	NUMBER of STUDENTS
Children's Hospital of Philadelphia	PA	PEDIATRICS	1
Children's National Medical Center	DC	PEDIATRICS	1
Christiana Care	DE	EMERGENCY MEDICINE	3
Christiana Care	DE	FAMILY MEDICINE	1
Christiana Care	DE	MEDICINE - PEDIATRICS	1
Cincinnati Children's Hospital	OH	PEDIATRICS/PSYCHIATRY/CHILD PSYCHIATRY	1
Cleveland Clinic Foundation	OH	ANESTHESIOLOGY	1
Cleveland Clinic Foundation	OH	GENERAL SURGERY	1
Cleveland Clinic Foundation	OH	INTERNAL MEDICINE	1
CMSRU/Cooper University Hospital	NJ	ANESTHESIOLOGY	1
CMSRU/Cooper University Hospital	NJ	DERMATOLOGY	1
CMSRU/Cooper University Hospital	NJ	EMERGENCY MEDICINE	1
CMSRU/Cooper University Hospital	NJ	NEUROLOGICAL SURGERY	1
CMSRU/Cooper University Hospital	NJ	ORTHOPAEDIC SURGERY	1
Crozer-Chester Medical Center	PA	TRANSITIONAL	2
Duke University Medical Center	NC	ORTHOPAEDIC SURGERY	2
Duke University Medical Center	NC	PEDIATRICS-RESEARCH TRACK	1
Eastern Virginia Medical School	VA	EMERGENCY MEDICINE	1
ECU Health Medical Center	NC	FAMILY MEDICINE	1
ECU Health Medical Center	NC	PSYCHIATRY	1
Emory University School of Medicine	GA	EMERGENCY MEDICINE	1
Emory University School of Medicine	GA	PEDIATRICS	1
Excelsa Health Latrobe Hospital	PA	FAMILY MEDICINE	1
FAU-Schmidt College of Medicine	FL	PSYCHIATRY	1
FAU-Schmidt College of Medicine	FL	SURGERY - PRELIM	1
Flushing Hospital Medical Center	NY	OB/GYN	1
Geisinger Health System	PA	ANESTHESIOLOGY	1
George Washington University	DC	OB/GYN	1
Harbor-UCLA Medical Center	CA	DIAGNOSTIC RADIOLOGY	1
Harbor-UCLA Medical Center	CA	GENERAL SURGERY	1
Henry Ford Hospital	MI	DERMATOLOGY	1
Henry Ford Macomb Hospital	MI	ORTHOPAEDIC SURGERY	1

LOCATION	STATE	SPECIALTY	NUMBER of STUDENTS
Hospital of the University of Pennsylvania	PA	ANESTHESIOLOGY	4
Hospital of the University of Pennsylvania	PA	DERMATOLOGY	1
Hospital of the University of Pennsylvania	PA	EMERGENCY MEDICINE	1
Hospital of the University of Pennsylvania	PA	FAMILY MEDICINE	2
Hospital of the University of Pennsylvania	PA	INTERNAL MEDICINE	3
Hospital of the University of Pennsylvania	PA	MEDICINE - PEDIATRICS	1
Houston Methodist Hospital	TX	VASCULAR SURGERY	1
Hunterdon Medical Center	NJ	FAMILY MEDICINE	1
Icahn School of Medicine at Mount Sinai	NY	INTERNAL MEDICINE	2
Icahn School of Medicine at Mount Sinai	NY	MEDICINE-PRIMARY CARE	1
Icahn School of Medicine at Mount Sinai/Beth Israel	NY	PSYCHIATRY	1
Icahn School of Medicine at Mount Sinai/Morningside West	NY	OB/GYN	1
Indiana University School of Medicine	IN	GENERAL SURGERY	1
Inspira Medical Center, Mullica Hill	NJ	FAMILY MEDICINE	1
Inspira Medical Center, Mullica Hill	NJ	TRANSITIONAL	1
Jefferson Abington Hospital	PA	FAMILY MEDICINE	2
Jefferson Abington Hospital	PA	GENERAL SURGERY	2
Jefferson Abington Hospital	PA	OB/GYN	1
Jersey Shore University Medical Center	NJ	OB/GYN	1
Johns Hopkins Bayview Medical Center	MD	INTERNAL MEDICINE	2
Johns Hopkins Hospital	MD	ANESTHESIOLOGY	1
Johns Hopkins Hospital	MD	INTERNAL MEDICINE	2
Johns Hopkins Hospital	MD	INTERVENTIONAL RADIOLOGY	1
Kaiser Permanente, Los Angeles	CA	MEDICINE - PRELIM	1
Kaiser Permanente, Santa Rosa	CA	FAMILY MEDICINE	1
Kirk Kerkorian SOM at University of Nevada	NV	GENERAL SURGERY	1
Lankenau Medical Center	PA	GENERAL SURGERY	2
Lankenau Medical Center	PA	MEDICINE - PRELIM	6
Lehigh Valley Hospital	PA	OB/GYN	1
Lehigh Valley Hospital	PA	PSYCHIATRY	2
Lehigh Valley Hospital	PA	TRANSITIONAL	1
Loma Linda University Medical Center	CA	ANESTHESIOLOGY	1

LOCATION	STATE	SPECIALTY	NUMBER of STUDENTS
Los Robles Regional Medical Center	CA	MEDICINE - PRELIM	1
Louisiana State University SOM, New Orleans	LA	INTERNAL MEDICINE	1
Massachusetts General Hospital	MA	ANESTHESIOLOGY	1
Massachusetts General Hospital	MA	CHILD NEUROLOGY	1
Massachusetts General Hospital	MA	PSYCHIATRY	1
Mayo Clinic School of Graduate Medical Education	FL	INTERNAL MEDICINE	1
Mayo Clinic School of Graduate Medical Education	MN	OPHTHALMOLOGY	1
MedStar Georgetown University Hospital	DC	PATHOLOGY	1
MedStar Washington Hospital Center	DC	OPHTHALMOLOGY	1
Memorial Hospital West	FL	OB/GYN	1
Mercy Catholic Medical Center	PA	TRANSITIONAL	1
Montefiore Medical Center/ Einstein	NY	INTERNAL MEDICINE	2
Montefiore Medical Center/ Einstein	NY	MEDICINE-PRIMARY CARE	1
Montefiore Medical Center/ Einstein	NY	PSYCHIATRY	1
Morristown Medical Center	NJ	GENERAL SURGERY	2
Naval Hospital Camp Pendleton - CA	CA	FAMILY MEDICINE	1
Northwestern Univ./McGaw-Lurie Childrens	IL	CHILD NEUROLOGY	1
Northwestern Univ./McGaw-Lurie Childrens	IL	PEDIATRICS	1
Northwestern University/McGaw Medical Center	IL	GENERAL SURGERY	1
Northwestern University/McGaw Medical Center	IL	NEUROLOGY	2
NY Eye and Ear Infirmary of Mount Sinai	NY	OPHTHALMOLOGY	2
NY Medical College, Metropolitan Hospital	NY	PSYCHIATRY	1
NY Presby Hospital-Columbia University Medical Center	NY	GENERAL SURGERY	1
NY Presby Hospital, Weill Cornell Medical Center	NY	ANESTHESIOLOGY	1
NY Presby Hospital, Weill Cornell Medical Center	NY	INTERNAL MEDICINE	1
NYU Grossman School of Medicine	NY	ANESTHESIOLOGY	1
NYU Grossman School of Medicine	NY	INTERNAL MEDICINE	2
NYU Grossman School of Medicine	NY	MEDICINE - PRELIM	1
NYU Grossman School of Medicine	NY	PLASTIC SURGERY	1
NYU School Of Medicine, Long Island	NY	ORTHOPAEDIC SURGERY	1
Ochsner Clinic Foundation	LA	ANESTHESIOLOGY	1
Ohio State University Medical Center	OH	ANESTHESIOLOGY	1

LOCATION	STATE	SPECIALTY	NUMBER of STUDENTS
Ohio State University Medical Center	OH	OTOLARYNGOLOGY	1
Oregon Health & Science University	OR	INTERNAL MEDICINE	1
Oregon Health & Science University	OR	OPHTHALMOLOGY	1
Penn Highlands Healthcare	PA	FAMILY MEDICINE	1
Penn State Univ. Hershey Medical Center	PA	OB/GYN	1
Pennsylvania Hospital	PA	MEDICINE - PRELIM	1
Prisma Health-University of South Carolina SOM	SC	ORTHOPAEDIC SURGERY	1
Providence Sacred Heart Medical Center	WA	TRANSITIONAL	1
Riverside Regional Medical Center	VA	TRANSITIONAL	1
Rutgers-New Jersey Medical School	NJ	EMERGENCY MEDICINE	1
Rutgers-New Jersey Medical School	NJ	OPHTHALMOLOGY	1
Rutgers-New Jersey Medical School	NJ	MEDICINE - PEDIATRICS	1
Rutgers-Robert Wood Johnson Medical School	NJ	ANESTHESIOLOGY	1
Rutgers-Robert Wood Johnson Medical School	NJ	INTERNAL MEDICINE	1
Rutgers-Robert Wood Johnson Medical School	NJ	OB/GYN	1
Sinai Hospital of Baltimore	MD	OPHTHALMOLOGY	1
SKMC/Nemours Children's Hospital	PA	PEDIATRICS	3
St. Luke's Hospital, Anderson	PA	DERMATOLOGY	1
St. Luke's Hospital, Anderson	PA	FAMILY MEDICINE	1
St. Luke's University Hospital, Bethlehem	PA	TRANSITIONAL	1
Stanford University Medicine	CA	PATHOLOGY	1
Temple University Hospital	PA	EMERGENCY MEDICINE	2
Temple University Hospital	PA	FAMILY MEDICINE	1
Temple University Hospital	PA	MEDICINE - PRELIM	1
Temple University Hospital	PA	OPHTHALMOLOGY	2
Temple University Hospital	PA	ORTHOPAEDIC SURGERY	1
Temple University Hospital	PA	UROLOGY	1
Thomas Jefferson University	PA	ANESTHESIOLOGY	6
Thomas Jefferson University	PA	DERMATOLOGY	2
Thomas Jefferson University	PA	DIAGNOSTIC RADIOLOGY	1
Thomas Jefferson University	PA	FAMILY MEDICINE	1
Thomas Jefferson University	PA	GENERAL SURGERY	1



LOCATION	STATE	SPECIALTY	NUMBER of STUDENTS
Thomas Jefferson University	PA	INTERNAL MEDICINE	6
Thomas Jefferson University	PA	MEDICINE - PRELIM	1
Thomas Jefferson University	PA	NEUROLOGICAL SURGERY	1
Thomas Jefferson University	PA	NEUROLOGY	1
Thomas Jefferson University	PA	ORTHOPAEDIC SURGERY	1
Thomas Jefferson University	PA	OTOLARYNGOLOGY	3
Thomas Jefferson University	PA	PATHOLOGY	2
Thomas Jefferson University	PA	PM&R	3
Thomas Jefferson University	PA	PSYCHIATRY	2
Thomas Jefferson University	PA	SURGERY - PRELIM	1
Thomas Jefferson University	PA	UROLOGY	1
Tufts Medical Center	MA	INTERNAL MEDICINE	4
Tufts Medical Center	MA	PSYCHIATRY	1
University of Rochester/Strong Memorial Hospital	NY	INTERNAL MEDICINE	1
University of Rochester/Strong Memorial Hospital	NY	THORACIC SURGERY	1
University of South Florida Morsani COM, Tampa	FL	INTERNAL MEDICINE	1
University of Tennessee Health Science Center, Memphis	TN	NEUROLOGICAL SURGERY	1
UCLA Medical Center	CA	DIAGNOSTIC RADIOLOGY	1
UCLA Medical Center	CA	RADIATION ONCOLOGY	1
UCLA Medical Center	CA	PATHOLOGY	1
UCLA Medical Center	CA	PEDIATRICS	1
UCLA Medical Center, Olive View	CA	MEDICINE-PRIMARY CARE	1
UCLA Medical Center, Santa Monica	CA	FAMILY MEDICINE	1
University at Buffalo School of Medicine	NY	OPHTHALMOLOGY	1
University of Arizona College of Medicine	AZ	GENERAL SURGERY	1
University of California, Irvine Medical Center	CA	ANESTHESIOLOGY	1
University of California, Irvine Medical Center	CA	FAMILY MEDICINE	1
University of Chicago Medical Center	IL	DIAGNOSTIC RADIOLOGY	1
University of Chicago Medical Center	IL	INTERNAL MEDICINE	1
University of Cincinnati	OH	OPHTHALMOLOGY	1
University of Colorado School of Medicine	CO	FAMILY MEDICINE	1
University of Colorado School of Medicine	CO	GENERAL SURGERY	1

LOCATION	STATE	SPECIALTY	NUMBER of STUDENTS
University of Connecticut School of Medicine	CT	PSYCHIATRY	1
University of Illinois COM, Chicago	IL	ORTHOPAEDIC SURGERY	1
University of Kentucky Medical Center	KY	OB/GYN	1
University of Maryland Medical Center	MD	ANESTHESIOLOGY	2
University of Maryland Medical Center	MD	GENERAL SURGERY	1
University of Maryland Medical Center	MD	INTERNAL MEDICINE	1
University of Maryland Medical Center	MD	OB/GYN	1
University of Maryland Medical Center	MD	PSYCHIATRY	1
University of Massachusetts Chan SOM	MA	ANESTHESIOLOGY	1
University of Massachusetts Chan SOM	MA	INTERNAL MEDICINE	1
University of Michigan Hospital, Ann Arbor	MI	ORTHOPAEDIC SURGERY	1
University of Michigan Hospital, Ann Arbor	MI	PEDIATRICS	1
University of Southern California	CA	INTERNAL MEDICINE	1
University of Texas SW SOM, Dallas	TX	PATHOLOGY	1
University of Vermont Medical Center	VT	FAMILY MEDICINE	1
University of Virginia	VA	OPHTHALMOLOGY	1
University of Washington Affiliate Hospitals	WA	ANESTHESIOLOGY	1
University of Washington Affiliate Hospitals	WA	DIAGNOSTIC RADIOLOGY	1
University of Washington Affiliate Hospitals	WA	UROLOGY	1
University of Wisconsin Hospital and Clinics	WI	FAMILY MEDICINE	1
UPMC	PA	MEDICINE - PEDIATRICS	1
UPMC	PA	"MEDICINE-RESEARCH-TRACK"	1
UPMC	PA	ORTHOPAEDIC SURGERY	1
UPMC	PA	PEDIATRICS	1
UPMC, St. Margaret	PA	FAMILY MEDICINE	2
USC Roski Eye Inst./Univ. of S. California	CA	OPHTHALMOLOGY	1
VCU Health System	VA	OB/GYN	1
VCU Health System	VA	UROLOGY	1
Wake Forest Baptist Medical Center	NC	DIAGNOSTIC RADIOLOGY	1
Wake Forest Baptist Medical Center	NC	FAMILY MEDICINE	1
Wake Forest Baptist Medical Center	NC	GENERAL SURGERY	1
Wake Forest Baptist Medical Center	NC	OTOLARYNGOLOGY	1

<b>LOCATION</b>	<b>STATE</b>	<b>SPECIALTY</b>	<b>NUMBER of STUDENTS</b>
Walter Reed National Military Medical Center	MD	INTERNAL MEDICINE	1
Wills Eye Hospital	PA	OPHTHALMOLOGY	3
Yale-New Haven Hospital	CT	EMERGENCY MEDICINE	1
Yale-New Haven Hospital	CT	PEDIATRICS	1
Zucker SOM Hofstra/ Northwell, NS & LIJ	NY	ORTHOPAEDIC SURGERY	2
Zucker SOM/Northwell Lenox Hill Hospital	NY	MEDICINE-PRIMARY CARE	1



**Sidney Kimmel Medical College  
at Thomas Jefferson University**

**Office of Admissions**

1015 Walnut Street, Suite 110  
Philadelphia, Pennsylvania 19107-5083

Phone: 215-955-6983

[SKMC.Admissions@jefferson.edu](mailto:SKMC.Admissions@jefferson.edu)  
[Jefferson.edu/SKMC](http://Jefferson.edu/SKMC)  
[Jefferson.edu/SKMCAAdmissions](http://Jefferson.edu/SKMCAAdmissions)