

sip winery.

CONCEPT

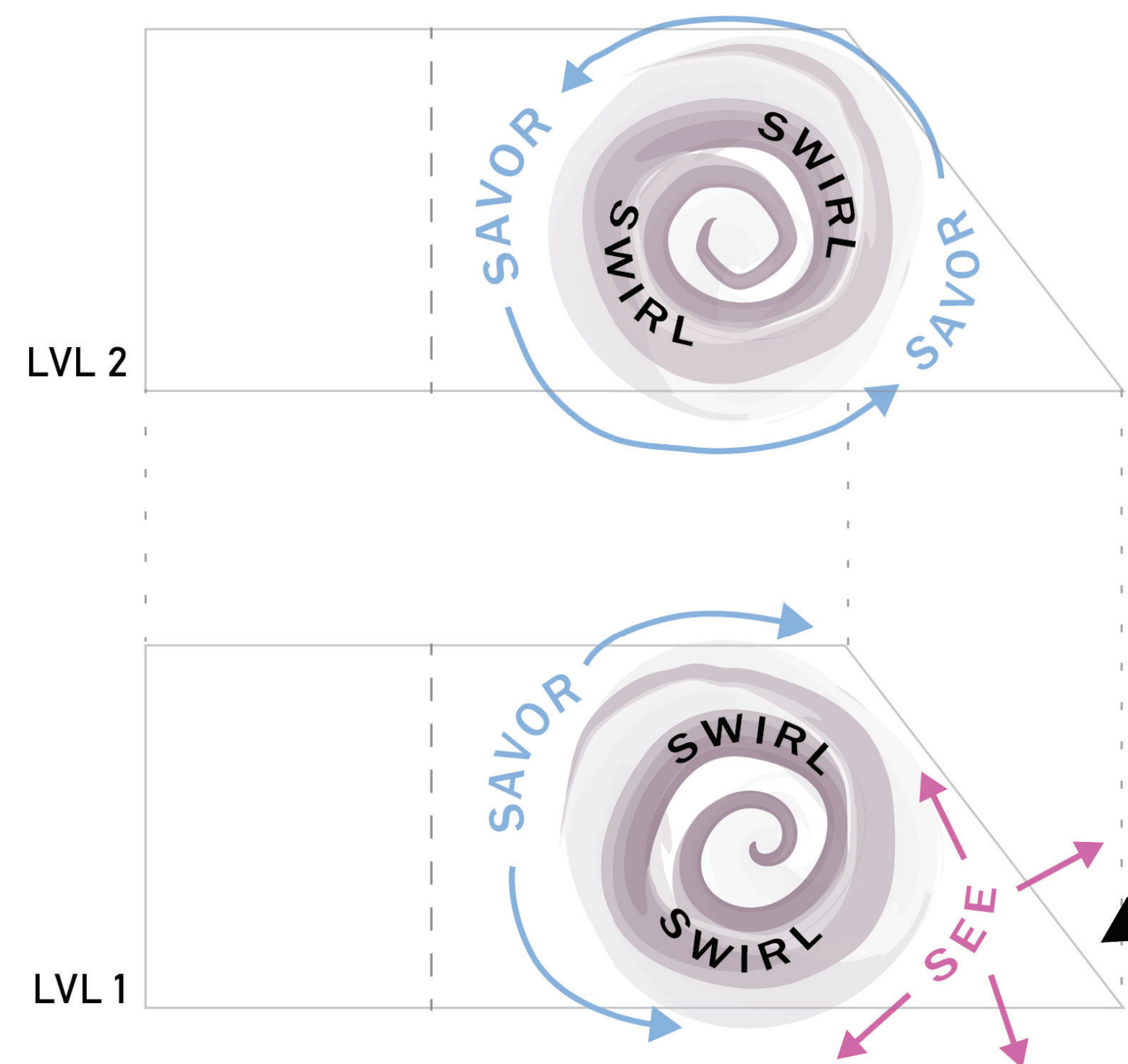
the design approach for *sip winery*. is based on a **social ecosystem** that responds to the environment, community, and history of manayunk. the interior architecture draws the user through the building by **mimicking the process of seeing, swirling, sipping, and savoring wine** - creating a sensory experience and encouraging human connection.

sip winery. is intended to be the central, social core, intertwining people, place, and planet.

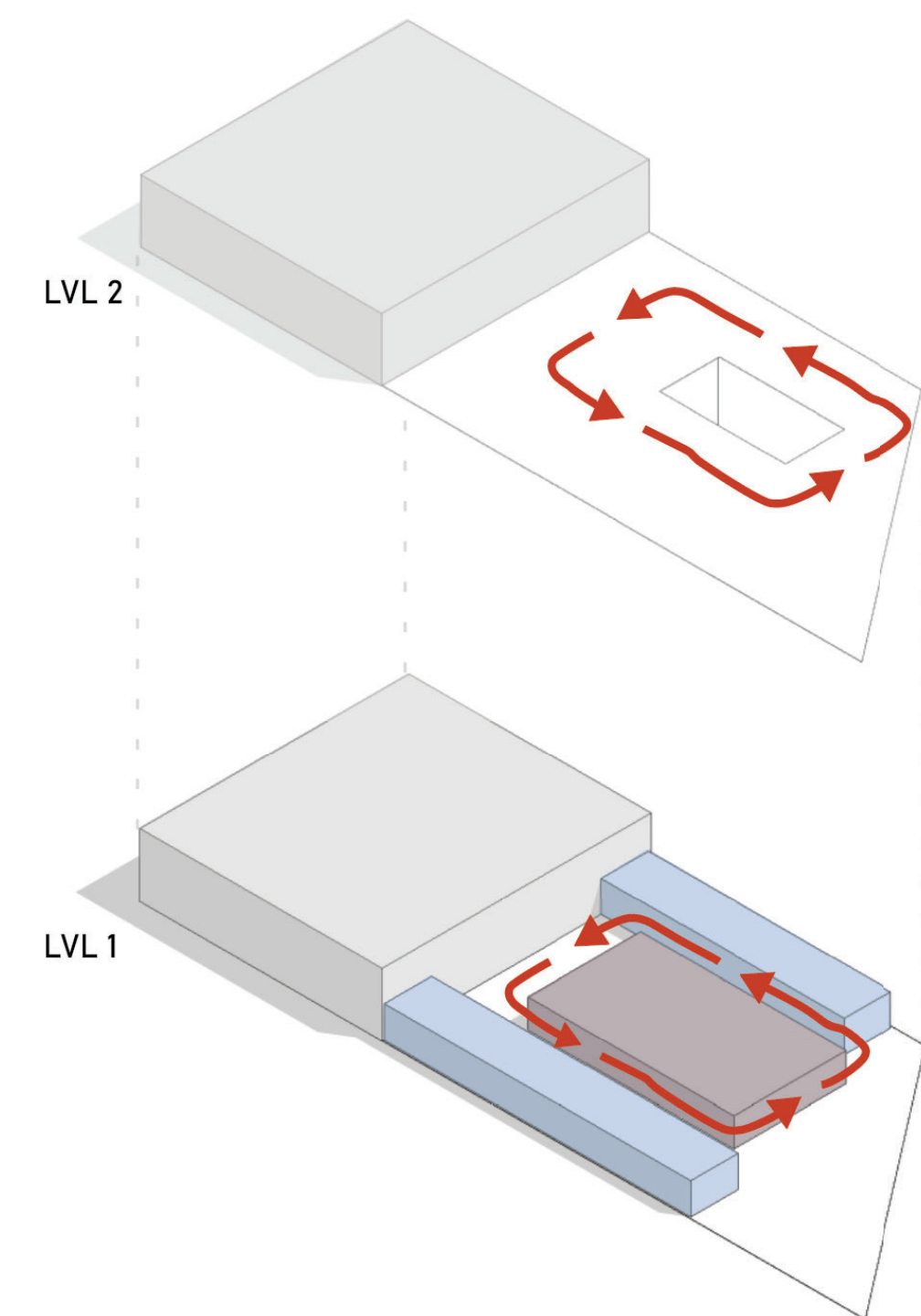
THE 5 S's OF WINE TASTING



CONCEPT DIAGRAM



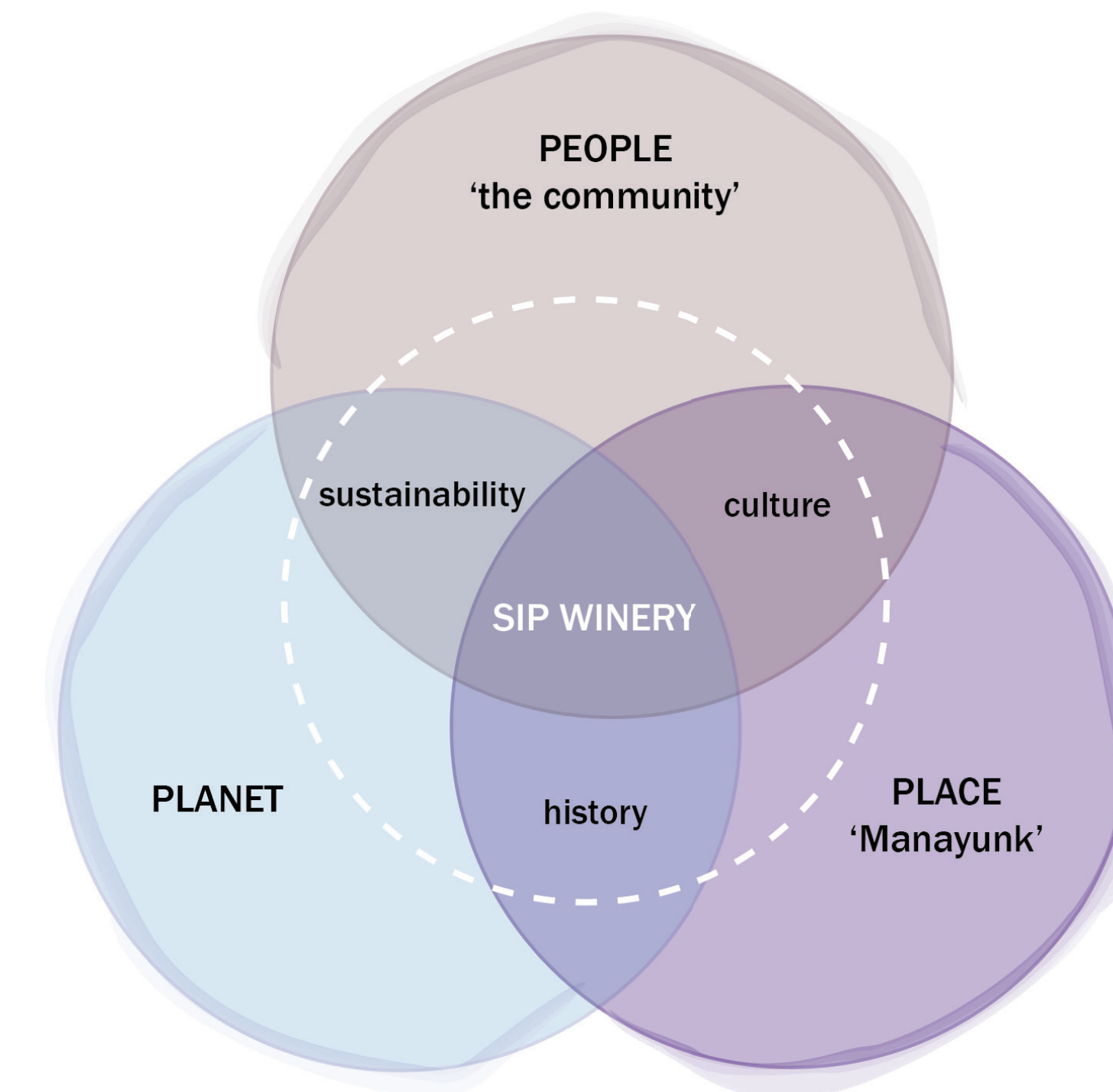
PARTI



BLOCKING DIAGRAM



GOALS



SUSTAINABILITY
create a winery with a sustainable footprint

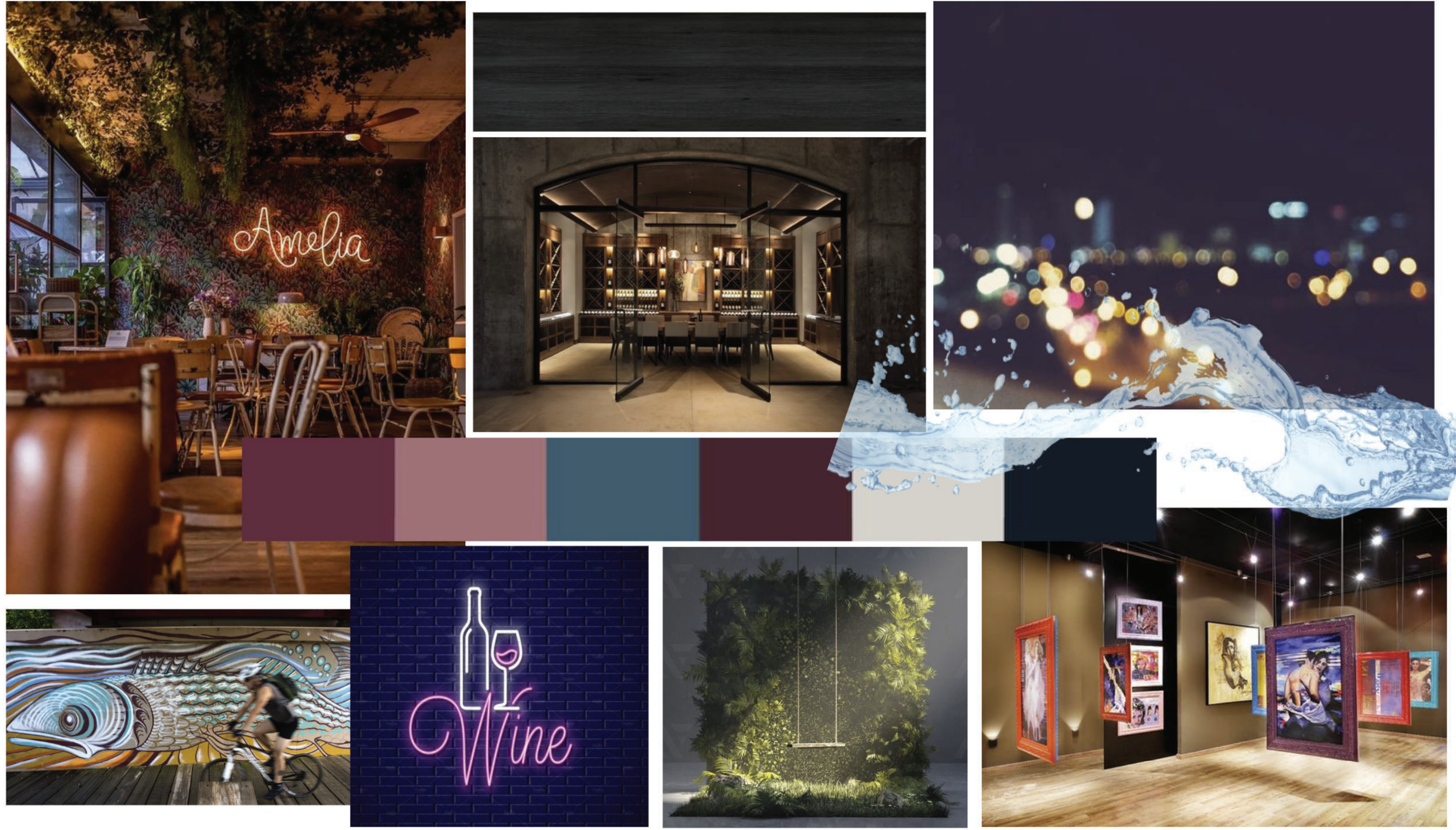
PEOPLE
establish strong identity with community culture

PLACE
create inviting environment conducive to socialization



MAIN ENTRY

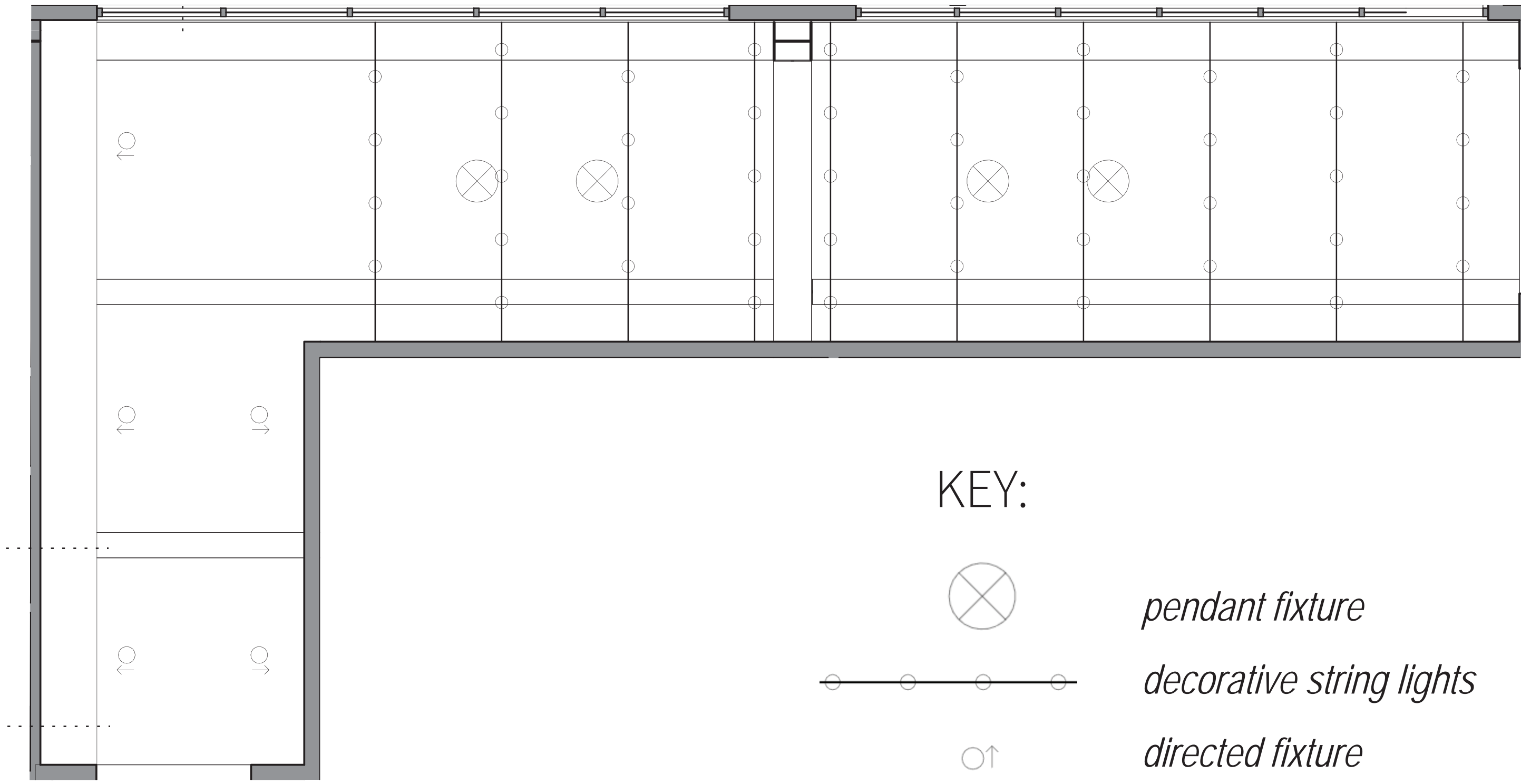
INSPIRATION



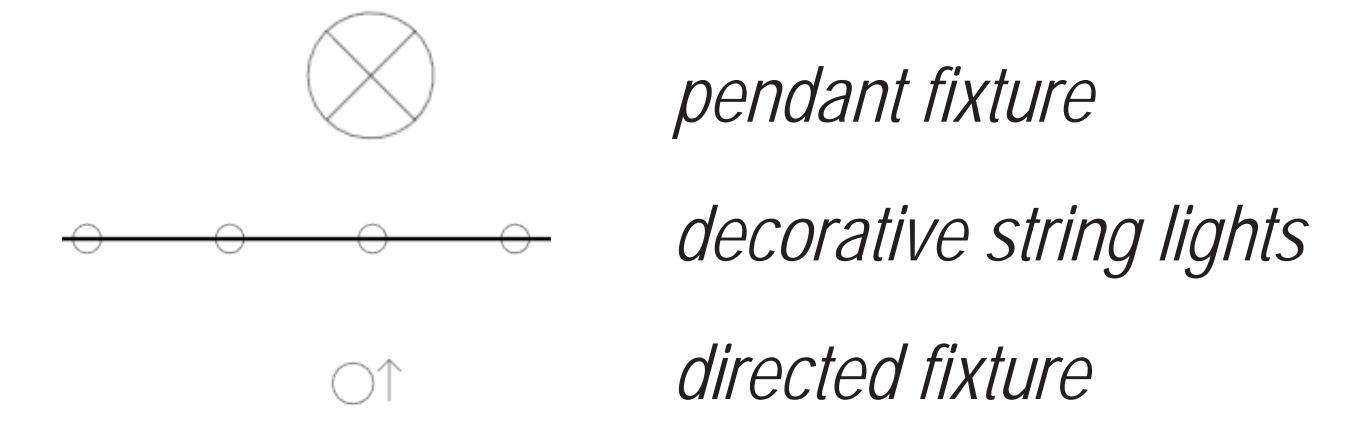
adjustable shades for sun control and human comfort

structural beams

exposed ceiling with wood panel treatment @ 14'-0"



KEY:



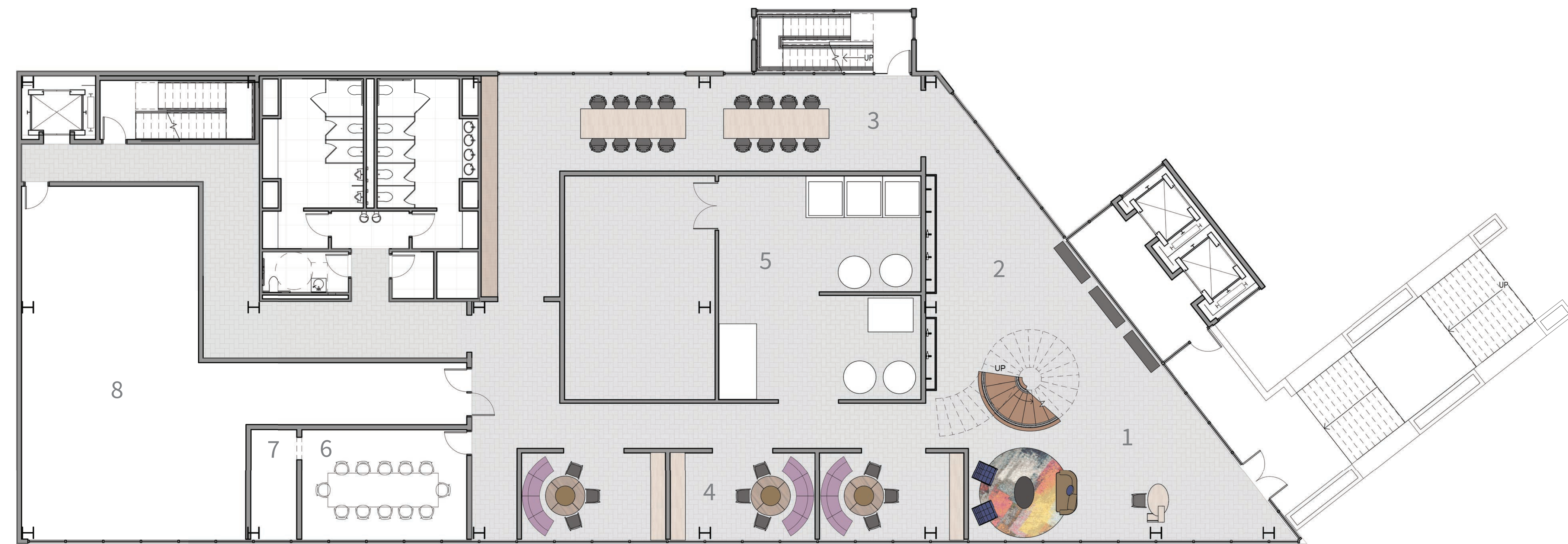
ENLARGED RCP - LARGE PRIVATE TASTING RM.
SCALE = 1/4" = 1'-0"

SELECTIONS



KEY:

- 1 main entry / lounge
- 2 retail display
- 3 large private tasting rm.
- 4 small private tasting rms.
- 5 wine making operations
- 6 staff gathering space
- 7 staff pantry
- 8 kitchen

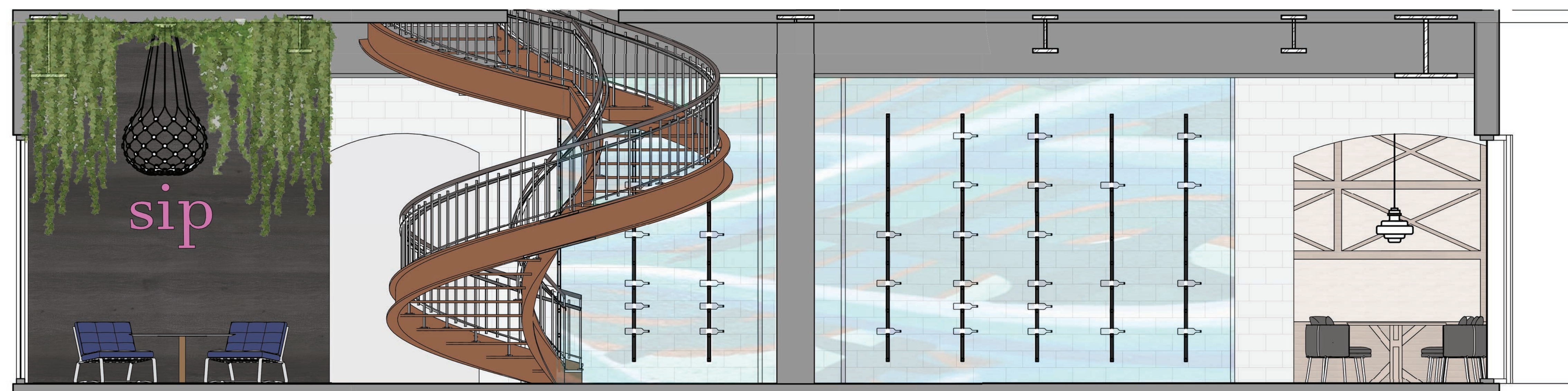


FLOOR PLAN - LEVEL 1
SCALE = 1/8" = 1'-0"

LARGE PRIVATE TASTING RM.



swirl,
sip,
savor.



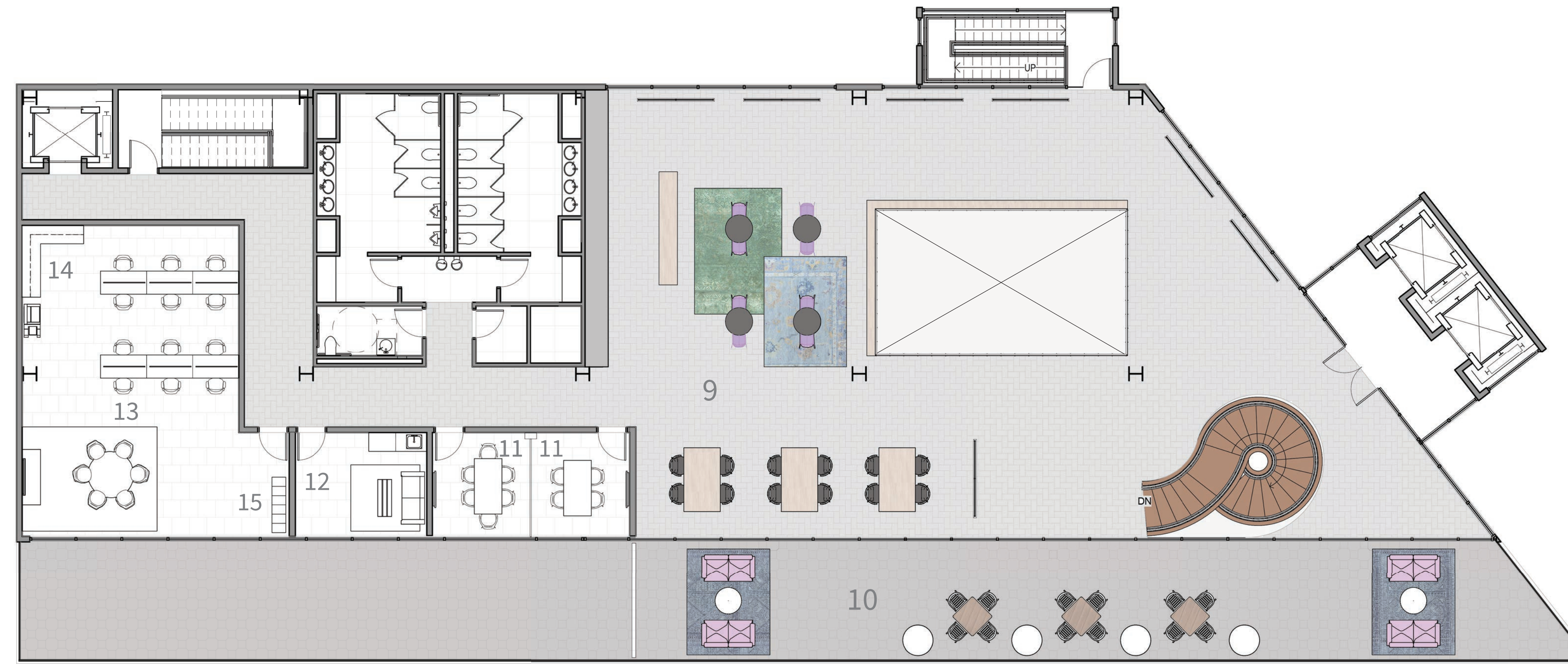
ELEVATION - MAIN ENTRY / RETAIL DISPLAY
SCALE = 3/8" = 1'-0"



ELEVATION - LARGE PRIVATE TASTING RM.
SCALE = 3/8" = 1'-0"

KEY:

- 9 gallery / public tasting rm.
- 10 terrace lounge
- 11 huddle rms.
- 12 wellness & multi-faith rm.
- 13 open office & collaboration
- 14 print / copy station / storage
- 15 lockers

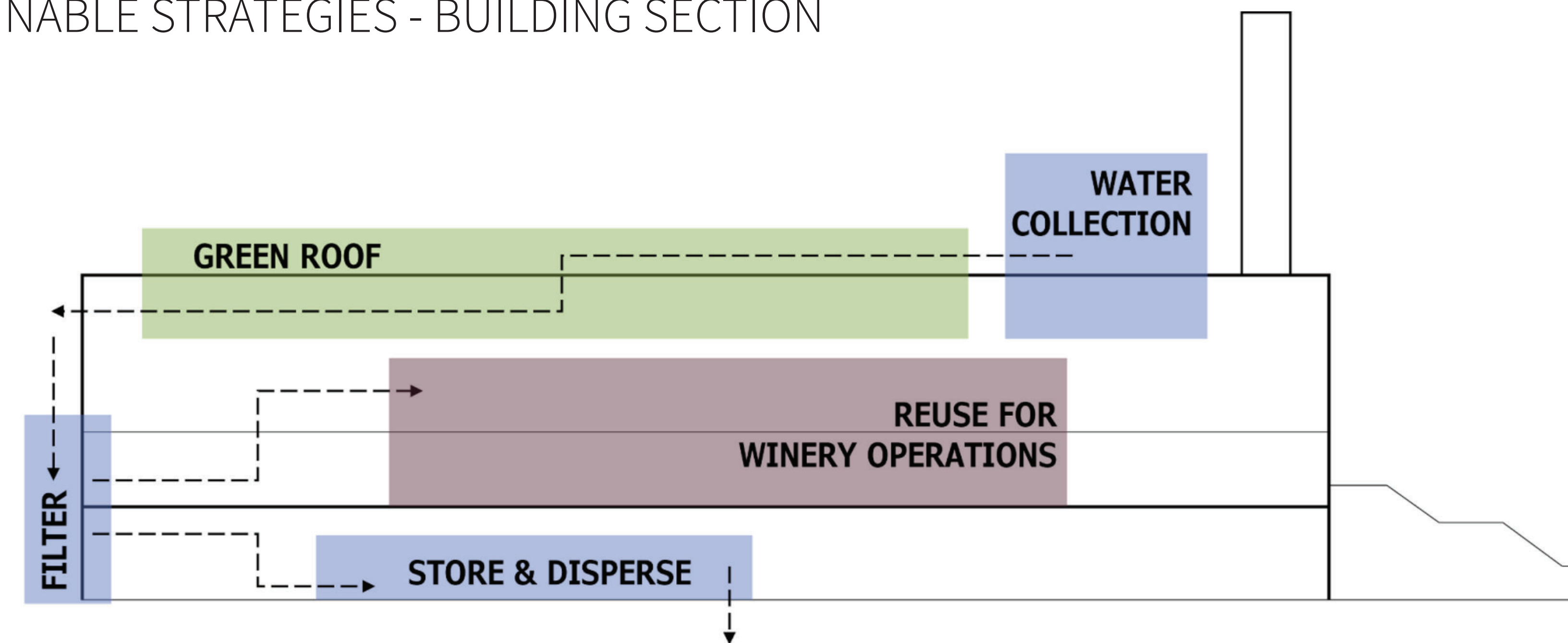


FLOOR PLAN - LEVEL 2
SCALE = 1/8" = 1'-0"



ELEVATION - GALLERY DISPLAY
SCALE = 3/8" = 1'-0"

SUSTAINABLE STRATEGIES - BUILDING SECTION



the arts.

graphic murals wrap around the winery operations, marking its significance and core of the building. these works of art are created by manayunk artists, paying homage to the culture of manayunk and philadelphia's diverse mural arts program. paul santoleri's "waters of change" and eurhi jones' "waterways" are highlighted. both projects call attention to the importance of conservation efforts along the schuykill and create a welcoming atmosphere to a once abandoned trail.



📍 PUBLIC GALLERY/TASTING RM.



📍 TERRACE