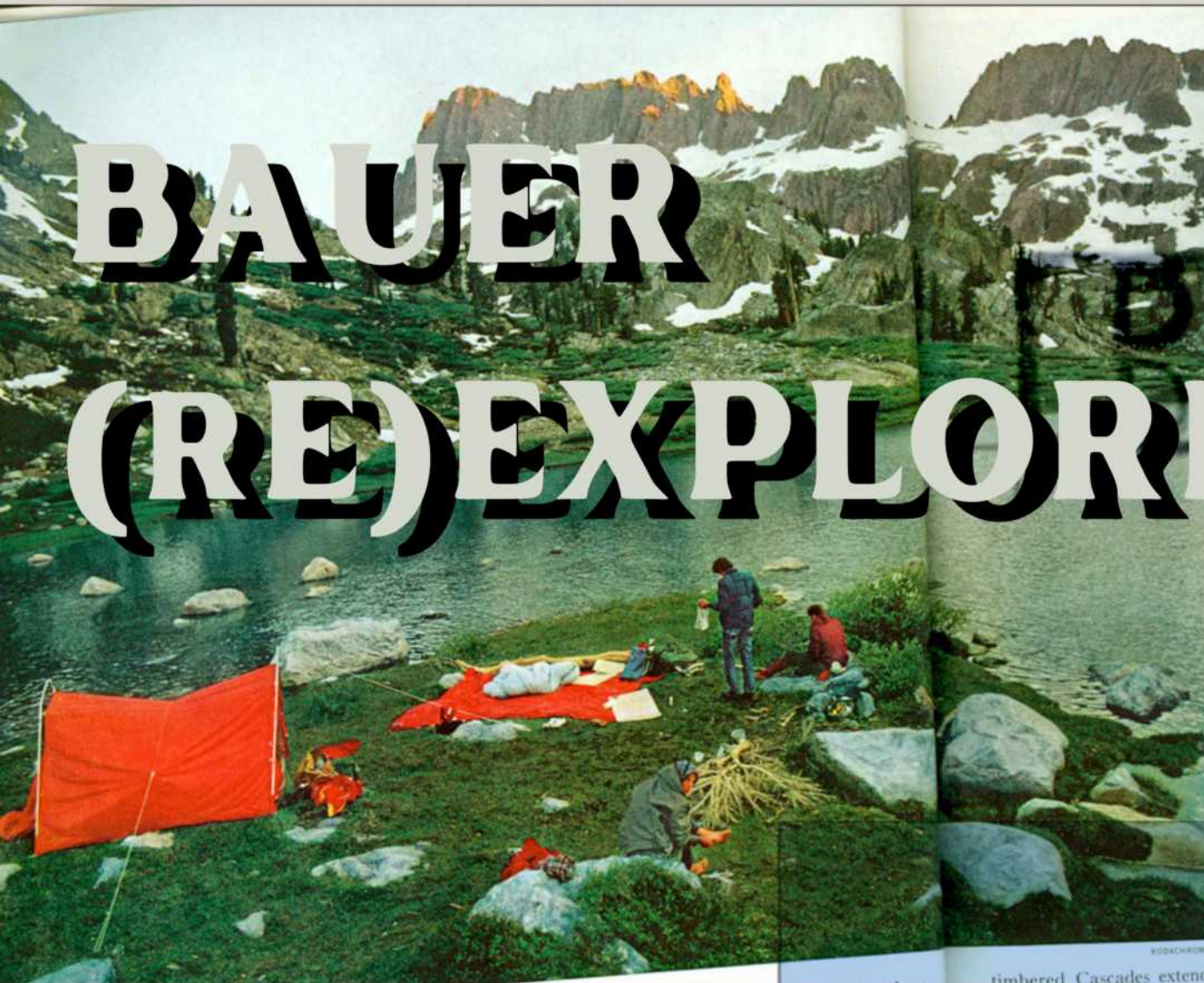


# BAUER (RE)EXPLORE



**A COLLECTION INJECTING  
THE NATURE OF  
EXPLORATION INTO THE  
CONSCIOUS FASHION  
FORWARD FUTURE OF  
OUTERWEAR APPAREL.**

1. TITLE
2. EXECUTIVE SUMMARY
- 3-6. KEY RESEARCH POINTS
7. DESIGN PROCESS
8. CONCEPT BOARD
9. MATERIAL BOARD
10. PRINT BOARD
- 11-14. ILLUSTRATIONS/FLATS
- 15-16. DESIGN HIGHLIGHTS
- 17-20. TECH PACK
21. WORK CITED

**DESIGN AND PRODUCT DEVELOPMENT**



# EXECUTIVE SUMMARY

**BAUER (RE)EXPLORE IS A COLLECTION DESIGNED FOR THE DISTINGUISHED OUTDOOR APPAREL BRAND EDDIE BAUER THAT HIGHLIGHTS THE FASHION FORWARD CONSCIOUS APPROACH TO DESIGN, WHILE THINKING OF THE FUTURE. INTRODUCING TEXTILES THAT ARE NATURAL, BIODEGRADABLE, AND REUSED ALLOWS THE CONSUMER TO CONNECT NOT ONLY TO THE BRAND BUT ALSO HOW EACH INDIVIDUAL INTERACTS WITH THE ENVIRONMENT THEY LIVE IN. BY EXPLORING NEW SILHOUETTES AND FABRICS INSPIRED BY THE ETHOS OF EDDIE BAUER, ALL WHILE TAKING ADVANTAGE OF WHAT THE BRAND HAS ALREADY BUILT WILL ENCOURAGE THE CONSUMER TO THINK NOT ONLY MORE SUSTAINABLY, BUT MORE CIRCULARLY AT A MORE ELEVATED LEVEL. THIS COLLECTION SETS OUT TO CONNECT THE EVOLVING GORPCORE LIFESTYLE TO THE ACTIVE NATURE OF GEN Z, ALL WHILE RESPECTING THE ORIGINAL AESTHETIC OF THE EDDIE BAUER BRAND.**



BAUER





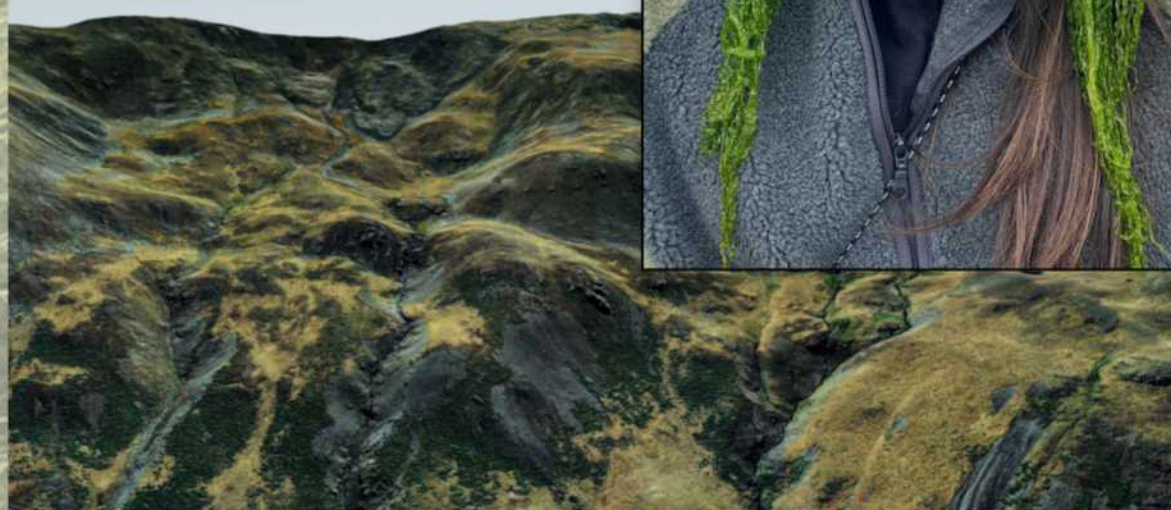
*Eddie Bauer*

**(Re)Adventure**

**(RE)EXPLORE**

**(RE)DISCOVER**

**(RE)DEFINE**



# EVOLVING MARKET

**FASHION-FORWARD CONSCIOUS PRACTICES ARE KEY TO CONSUMERS SHOPPING IN 2025. EDDIE BAUER HAS DONE A GOOD JOB INITIATING PROGRAM'S SUCH AS THEIR (RE)ADVENTURE PROGRAM, AIMED TO PRESERVE NATURAL RESOURCES AND THE ENVIRONMENTAL CONDITIONS THAT ALLOW [THE] COMMUNITY OF OUTDOOR ENTHUSIASTS TO THRIVE...MAKING THE OUTDOORS MORE ACCESSIBLE AND SUSTAINABLE THAN EVER." (1) TAKING ADVANTAGE OF THIS PROGRAM AND USING MATERIALS THAT ARE RECYCLED THROUGH THE PROCESS, AS WELL AS INTRODUCING AN ARCHIVAL SECTION TO THE RESELL WEBSITE WILL HELP A NEW AUDIENCE CONNECT WITH WHAT EDDIE BAUER WAS, AS WELL AS SEE WHAT DIRECTION THE FUTURE HOLDS.**

# PURCHASE DRIVERS

KEEPING IN TOUCH WITH YOUR ENVIRONMENT AND INTRODUCING AN ESTABLISHED BRAND TO A NEWER CONSCIOUS AUDIENCE ARE KEY DRIVERS FOR THIS COLLECTION. BEING ABLE TO INTRODUCE INNOVATIVE SUSTAINABLE TEXTILES TO AN AUDIENCE EXCITED AND READY FOR A MAJOR FASHION SHIFT IS SOMETHING THAT I FEEL LIKE EDDIE BAUER CAN TAKE ADVANTAGE OF.

“A NEW ERA OF SMART AND ‘SIMULATED’ TEXTILES...BIO-FABRICATED MATERIALS GROWN IN LABS, CELLULOSIC MATERIALS MADE FROM FOOD WASTE, AND CHEMICALLY RECYCLED TEXTILES, WHICH ARE MADE FROM PREVIOUSLY EXISTING FIBERS SUCH AS COTTON AND POLYESTER“ (2) WILL BECOME A NECESSITY BY 2030. AS PREDICTED BY A WGSN TREND ANALYST, “CONSUMERS ARE MORE ECO-CONSCIOUS THAN EVER BEFORE AND ARE FOCUSING ON SUSTAINABLE FORMULATIONS THAT DO NOT SACRIFICE EFFECTIVENESS.“ (3) INTRODUCING INNOVATIVE TEXTILES AT AN ACCESSIBLE PRICE POINT IS SOMETHING EDDIE BAUER COULD INTRODUCE TO THE OUTERWEAR APPERAL WORLD IN 2025



# CONNECTING THE CONSUMER

**BUILDING A STORY AND A PURPOSE FOR THIS COLLECTION WHILE PRESENTING IT TO THE NEW FASHION FORWARD COMMUNITY IN A FRESH AND THOUGHTFUL WAY CAN BUILD A FOLLOWING OF NEW CONSUMERS SUCH AS GEN Z AND MILLENNIALS. “ CORE ITEMS MOVE IN A MORE ELEVATED DIRECTION, WITH AN EMPHASIS ON TIMELESS, CLASSIC STYLES. SOURCE YARNS WITH SUSTAINABILITY CREDENTIALS AND ENHANCED PERFORMANCE QUALITIES (5)“ CAN ENHANCE THE ABILITY TO CONNECT TO THE GARMENT AS THE CONSUMER.**

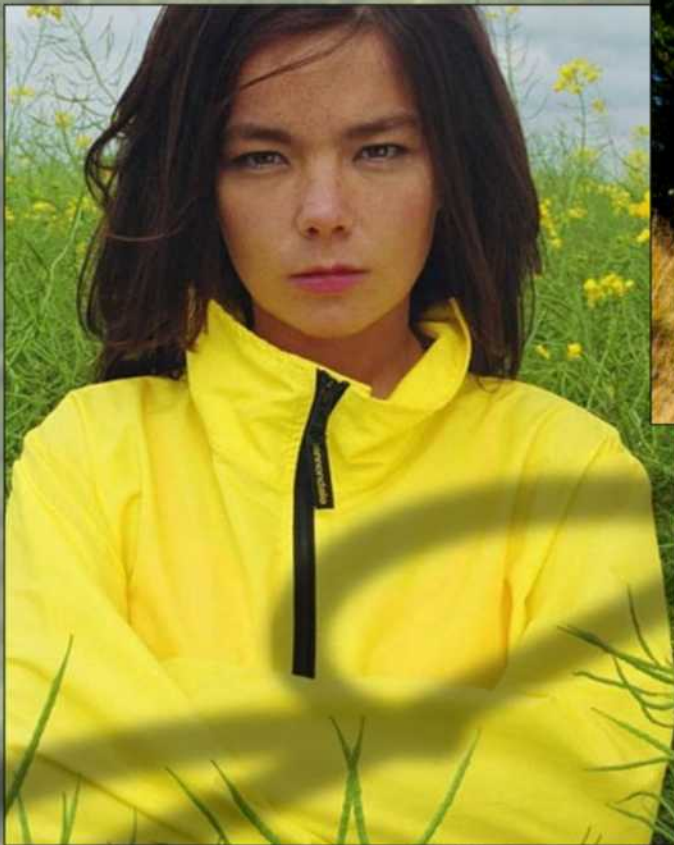
**INTRODUCING SMART FABRICS AND MOVEMENT TRACKING OFFERED IN THE CLOTHING CAN IMPROVE DAILY ACTIVITY AND COMFORT, WHICH IS FOREVER CHANGING. ALSO CONTINUING TO IMPROVE EDDIE BAUER’S BUY BACK PROGRAM AND OFFERING TAILORING AND REPAIR CAN ALSO INCREASE THE SENSE OF COMMUNITY EDDIE BAUER CAN OFFER**



# EDDIE BAUER

# KEY TRENDS

**THE EVOLUTION OF GORPCORE IS SOMETHING TO PAY ATTENTION TO IN THE YEAR 2025. WITH GORPCORE BEING SO DOMINANT IN FASHION IN 2023, A MORE REFINED AND FUNCTIONAL APPROACH OF OUTERWEAR DESIGN WILL BE PRESENTED AS VERSATILE, LUXURY, AND INTERCHANGEABLE. AWAKENING THE FASHION FORWARD CONSUMER TO BE MOTIVATED TO BY WITH ENVIRONMENTAL CONNECTIONS IS ALSO KEY WHEN IT COMES TO 2025**



**“KNITWEAR CONTINUES TO BECOME MORE ELEVATED, WITH DESIGNERS CREATING VERSATILE, HARDWORKING OPTIONS...THIS IS TRANSLATED INTO ELEGANT PIECES AND FOCUSED COLLECTIONS THAT ELEVATE ONE HERO STITCH WITH PARED-BACK SILHOUETTES AND... BOLD, VIBRANT AND DECORATIVE PIECES OFFER MAXIMUM IMPACT. MOOD-BOOSTING COLOR AND PRINT IS HIGHLIGHTED“ (4) WITH ELEVATED GARMENTS IN THE FUTURE FORCASTS, KEEPING SILHOUETTE SIMPLE YET EXPLORATIVE CAN REFRESH A TRADITION.**

# DETAIL ORIENTED

love diamond gradient, very modern

Super cool details, keeping ethos

Spring up collar with Fun shapes

un-expected practicality

bringing both the ethos of the brand heritage and combining the love of gorpcore trends, details is really where it comes together. Using original details picked out from Eddie Bauer archives while combining new ideas seen in fashion now, the reinvented skyliner cannot only bring a refreshing new energy, but also a recognizable one.

ribbed collar, side panels, cuffs

more open from adjustable collar

PERMEABLE LINING

EDDIE BAUER SPORT SHOP

# DESIGN PROCESS

LETTING THE ARCHIVE OF EDDIE BAUER INSPIRE MANY DESIGN WILL ALLOW THE THE BRANDS IDENTITY TO STAY ALIVE WITHIN THE NEW, LUXURY CASUAL MATERIAL EXPLORATION.

overly of fabric, more traditional? upcycled?

practical street fashion

old but new feel

keeping core silhouettes but adding statement

REVERSE SIDE

HERITAGE INSIDE VIEW

vibrant vintage

Highlighting the heritage and original use of the skyliner is key to keep the brand's ethos at heart, "guiding anyone and everyone to an inspiring outdoor experience".

BAUER Skyliner Model DOWN JACKET

100% DOWN BODY AND SLEEVES

The last, but not least, one of Alaska's greatest survivors, Edsel, said, "I personally will fully recommend this jacket on the basis of 11 years of all-weather flying all over Alaska and on the experience gained with the Skyliner. Without the Skyliner and on the strength of this to which I have subjected Bauer Skyliner Down Jacket."

"A lot of outdoor commentators... This jacket... will keep you dry... winter weather? Designed to allow maximum freedom, without bulk or weight. Full nylon lined. Three main pockets. Zipper from two main pockets, unobstructed. The specially woven... outer fabric is light and soft yet has exceptional wearing qualities. Two-way knit cuffs. A comfortable pocket with zipper opening. Weighs 4 lb. 10 oz. with hood and... with hood and..."

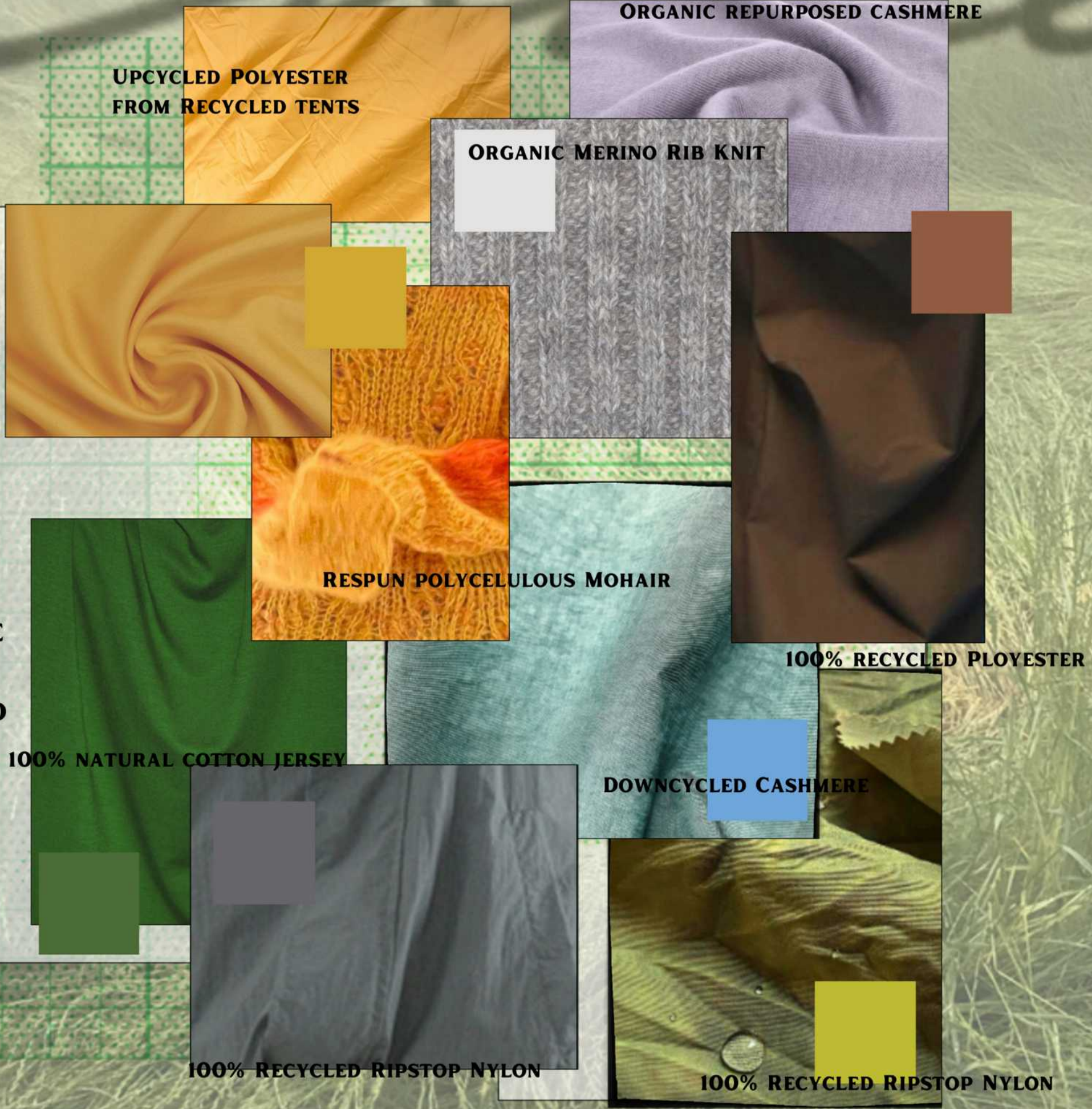
EDDIE BAUER'S RICH HISTORY OF JACKET DESIGN CAN BE REFERENCED IN ANY AND ALL GARMENTS, SO REALLY LETTING THE ETHOS OF THE BRAND LIVE ON THROUGH DESIGN IS A GREAT WAY TO RESPECT THE PAST AND PUSH TOWARDS THE FUTURE.



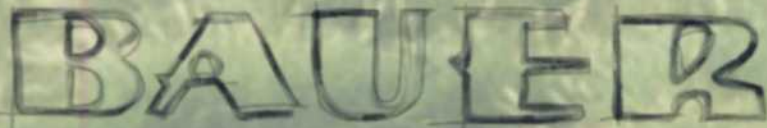
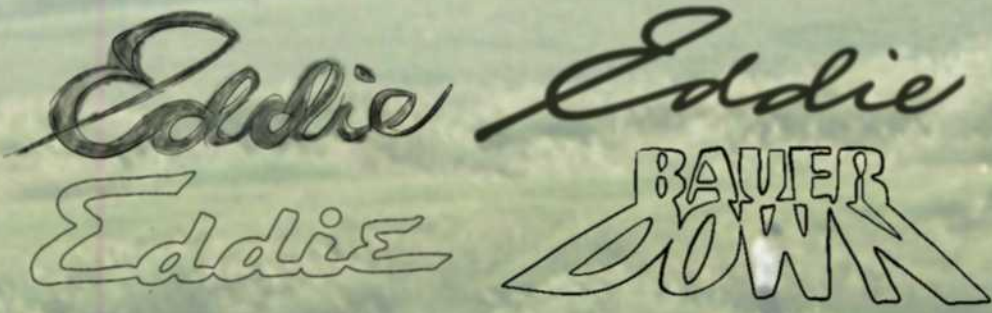


# FABRIC BOARD

**EDDIE BAUER IS KNOWN FOR ITS INNOVATIVE OUTERWEAR FABRICATIONS, BUT MOST OF THESE INNOVATIONS INVOLVE SYNTHETIC FIBERS. UPCYCLING AND DOWN CYCLING THESE SYNTHETIC MATERIALS, WHILE ALSO INTRODUCING NATURAL AND INNOVATIVE FABRICS TO THE BRAND WILL OFFER ANEW, MORE LUXURY-CASUAL ATHLETIC TO THE EXISTING CONSUMER AS WELL AS A NEW AUDIENCE MORE INTERESTED IN INCORPORATING INNOVATION AND FUNCTION INTO THEIR CLOSET. "NATURAL YARNS OFFER BREATHABILITY AND BIODEGRADABILITY, WHILE A WIDE RANGE OF ENHANCED YARNS ARE ALSO AVAILABLE IN RECYCLED AND BIO-BASED OPTIONS IF USING MANMADE FIBRES (5)." RECYCLED MOHAIR AND CASHMERE ARE TWO KNIT FABRICS THAT WILL BE INTRODUCED IN MANY DIFFERENT GARMENTS AS A COMFORT LAYER THAT STILL OFFERS BENEFITS LIKE THERMAL REGULATION AND BREATHABILITY.**



# PRINT BOARD



**EDDIE ABSTRACT PRINT**  
(RECYCLED RIPSTOP NYLON)



**FLORAL MAPPING PRINT**  
(RESPUN CASHMERE KNIT)



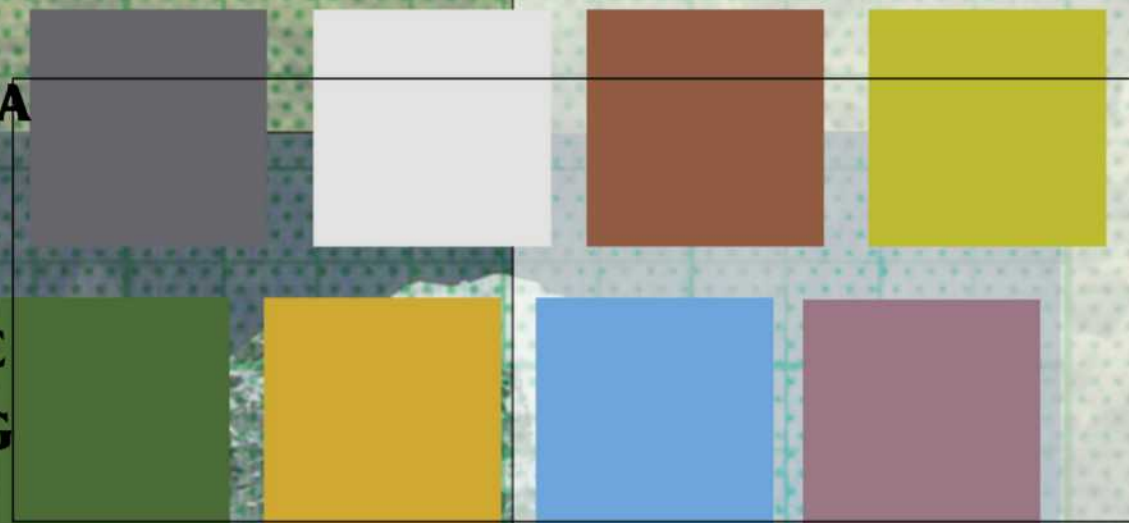
**REIMAGINING NATURAL PRINTS IN A MORE FREE FORM WAY IS SOMETHING THAT WE CAN PREDICT TO SEE IN 2025. THE PRINTS I HAVE DESIGNED OFFER A WIDE RANGE OF COLLOR AND TEXTURE, FROM RIDGID AND BUSY, TO SMOOTH AND CLEAN.**

**CASCADE INTARSIA**  
(MERINO WOOL KNIT)



## COLOR PALETTE

**REDESIGNING LOGOS AND ALSO OFFERING A COLOR STORY THAT INSPIRES MOVEMENT AND WELL BEING ARE KEY WHEN DESIGNING FOR THE FASHION FORWARD CONSUMER.**



# LINE UP



# LINE UP

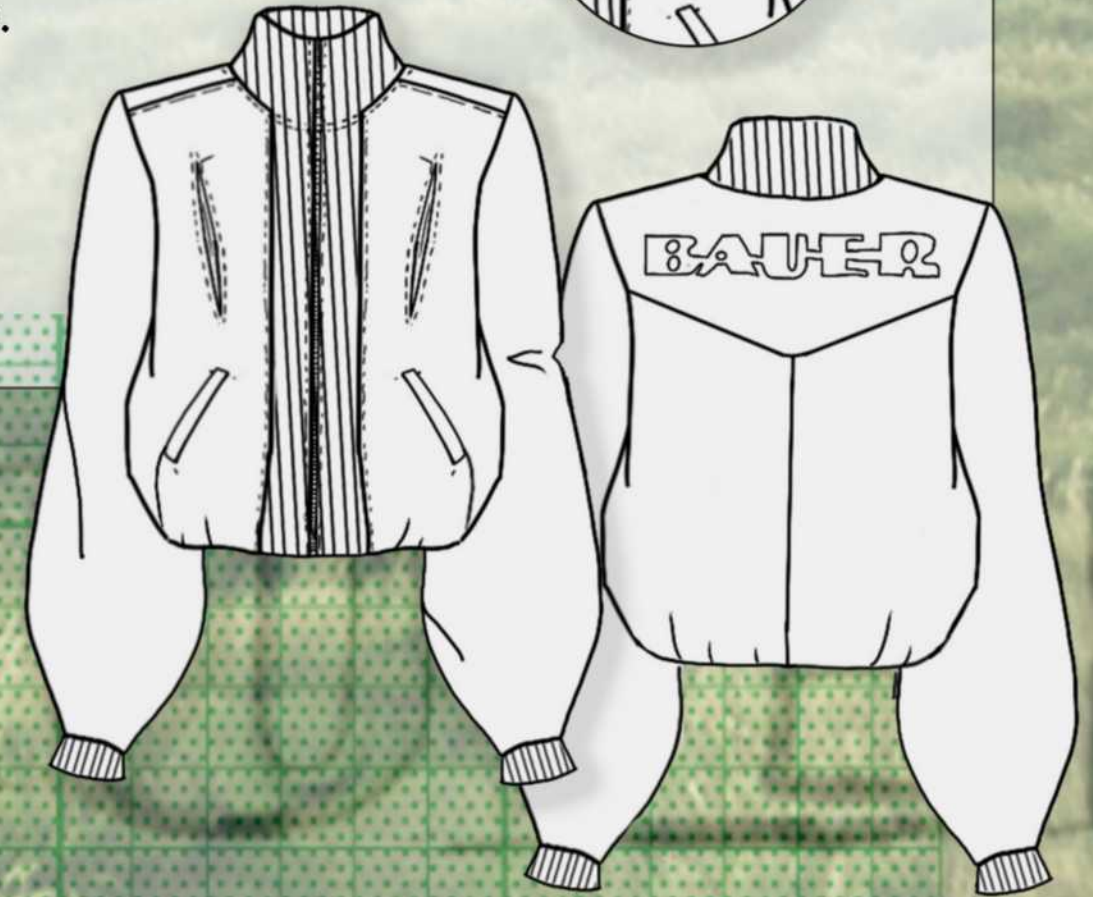
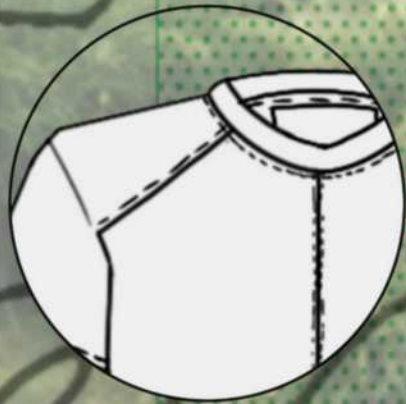
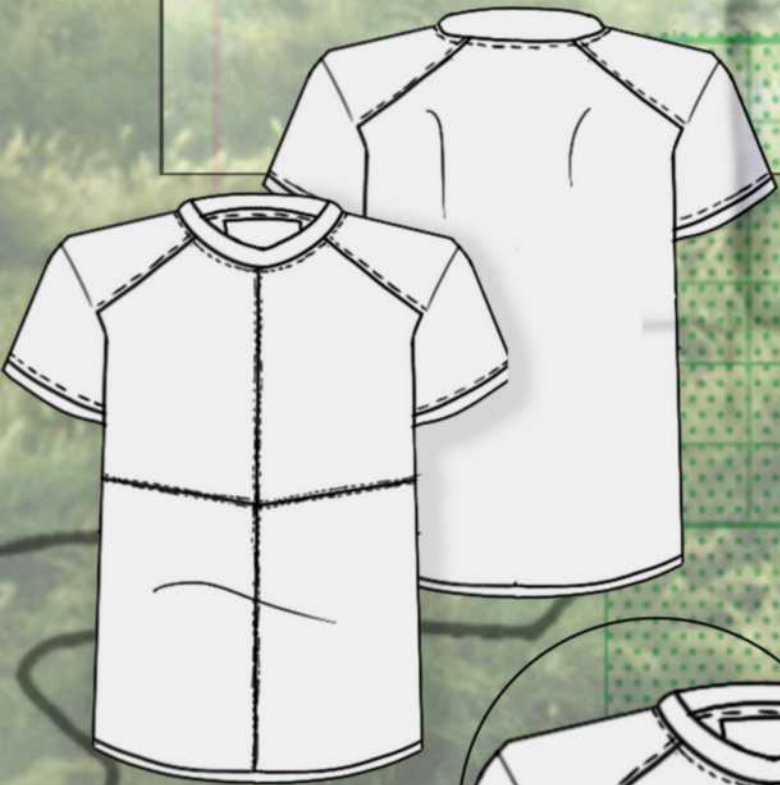
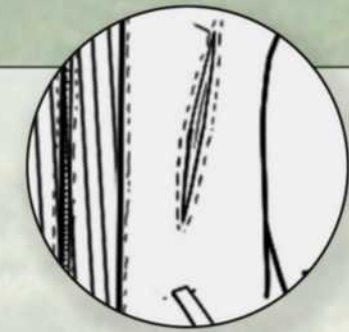


# LINE UP

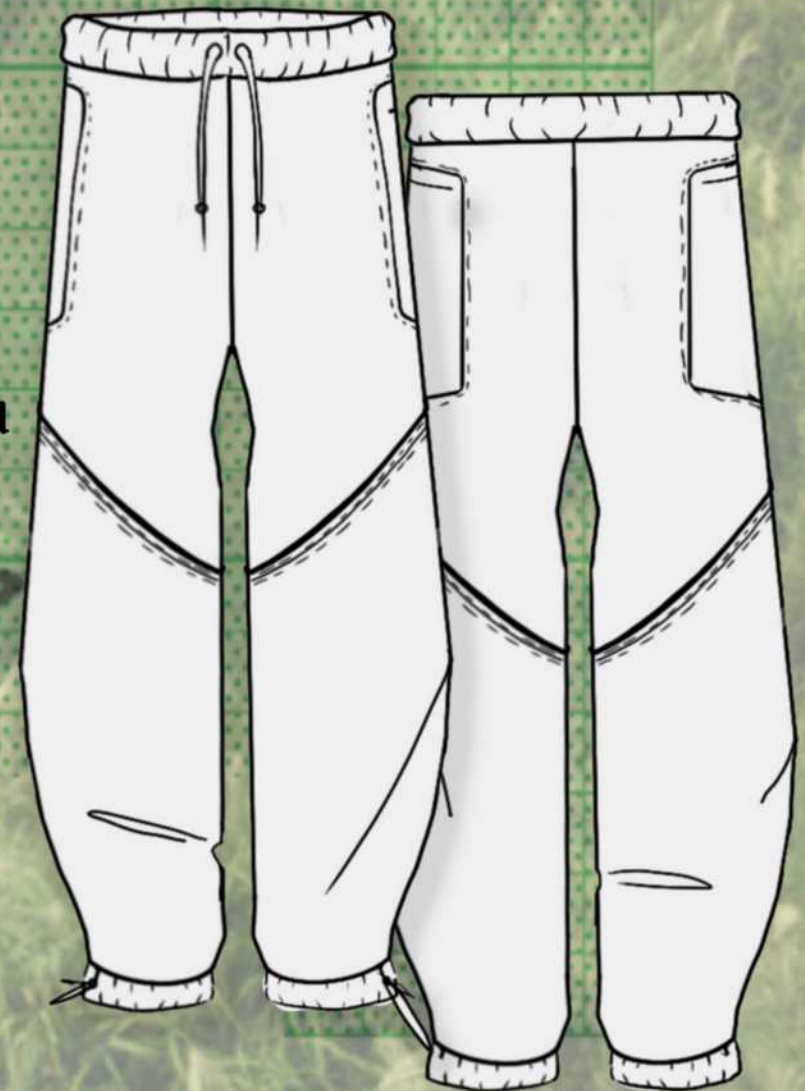
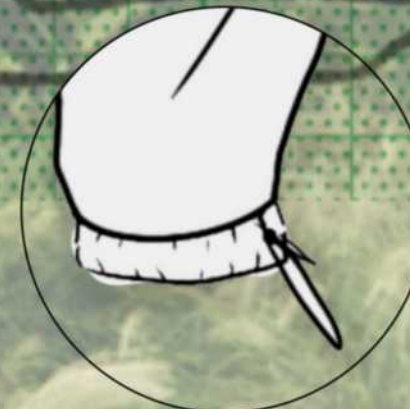


# FLAT OF LOOK 5

Involving fabric manipulations like this box pleated air vent is evolving outerwear to be more versatile with the weather becoming more and more unpredictable.



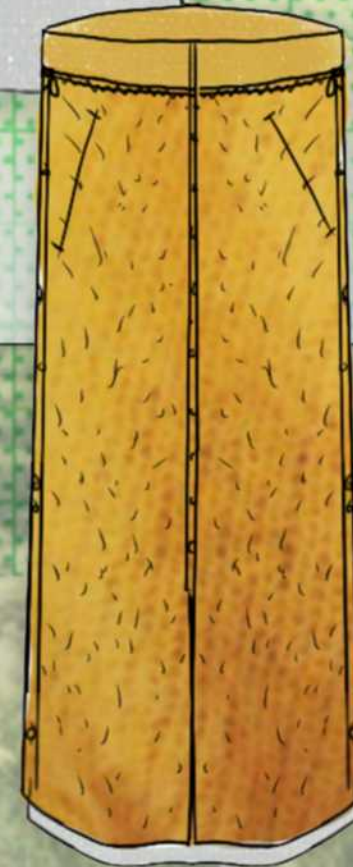
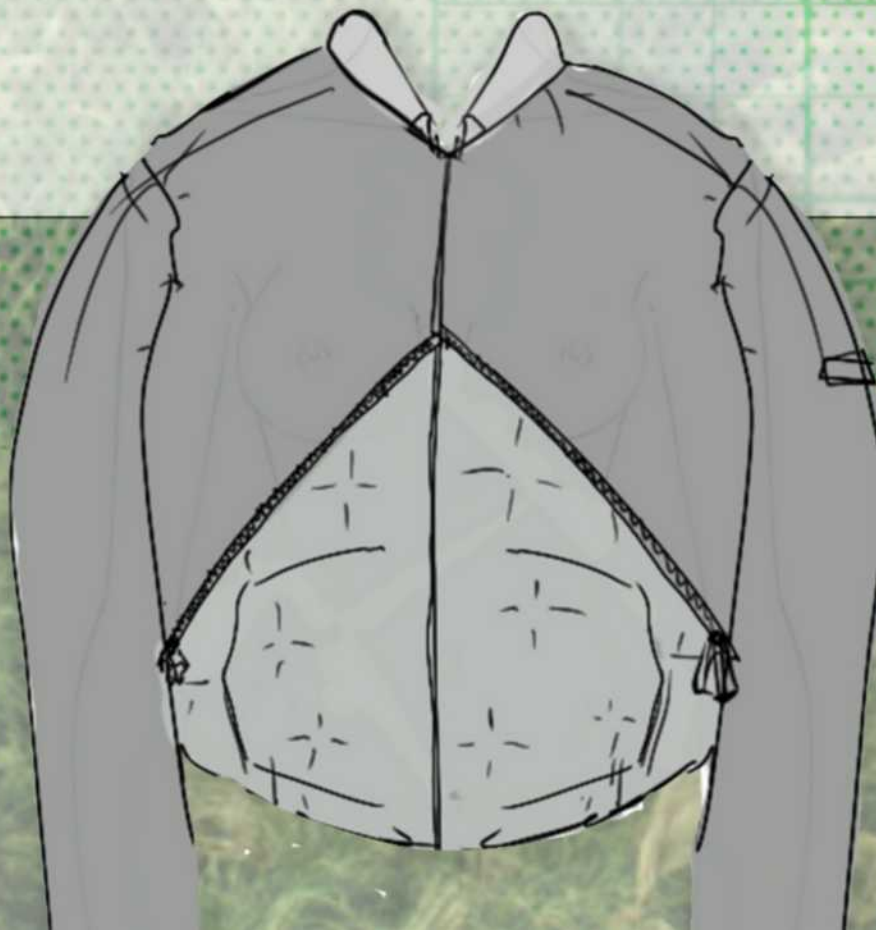
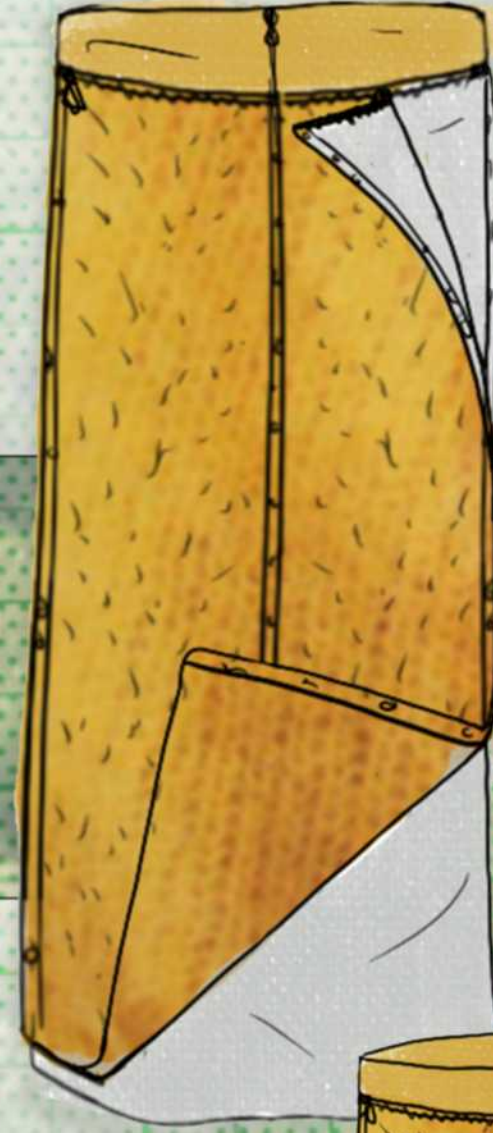
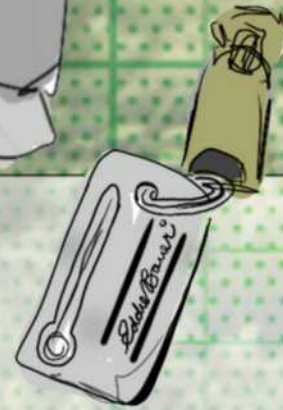
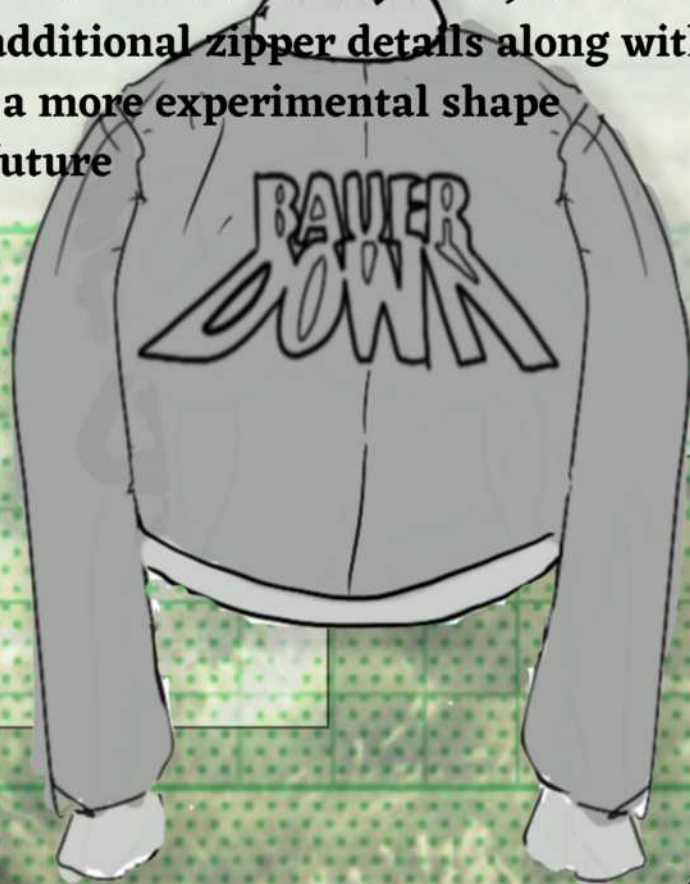
Offering ways that the clothing can be versatile and dynamic in very simplistic ways can elevate outerwear to a point of luxury and finesse.



Introducing new biodegradable jersey knits can add a layer of sustainability that is forward thinking and will be accessible in the year 2025.

# DESIGN HIGHLIGHTS

**This puffer takes reference from the iconic Skyliner Jacket with the diagonal cut, and additional zipper details along with monochrome branding and a more experimental shape elevates this jacket for the future**



**This regenerated mohair skirt transforms into a lighter weight, fuller skirt, while the mohair can reattach into a blanket or shawl accessory.**

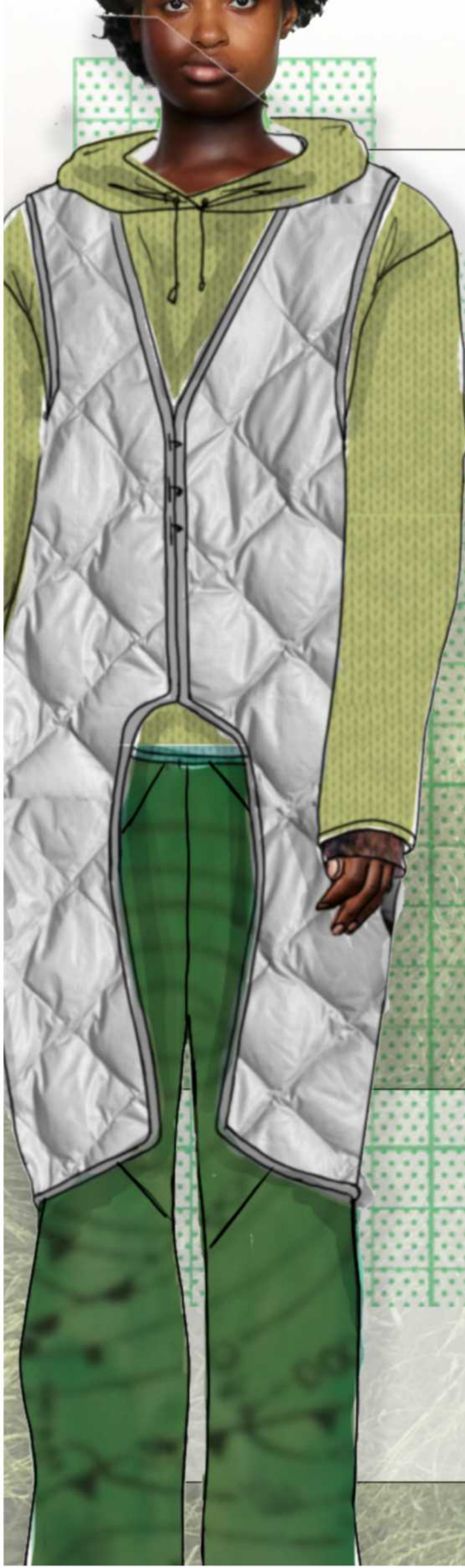
# DESIGN HIGHLIGHTS

**Cashmere low gauge cable knit sweatshirt to provide the elements of breathability as well as insulation to a more elevated layer.**



**One main focus for this collection was to introduce new sustainable natural textiles that also involve function. Merino Wool and Cashmere knits are both soft and luxurious knits that also introduce thermal regulation and insulation without using synthetic fibers.**

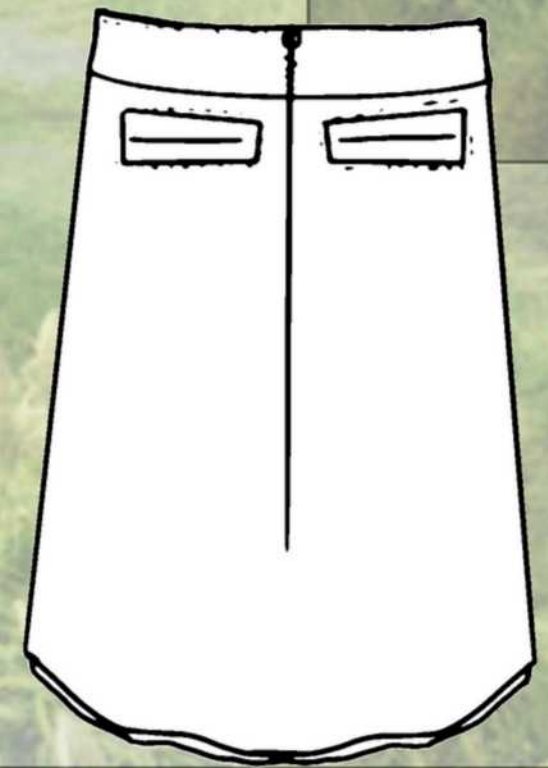
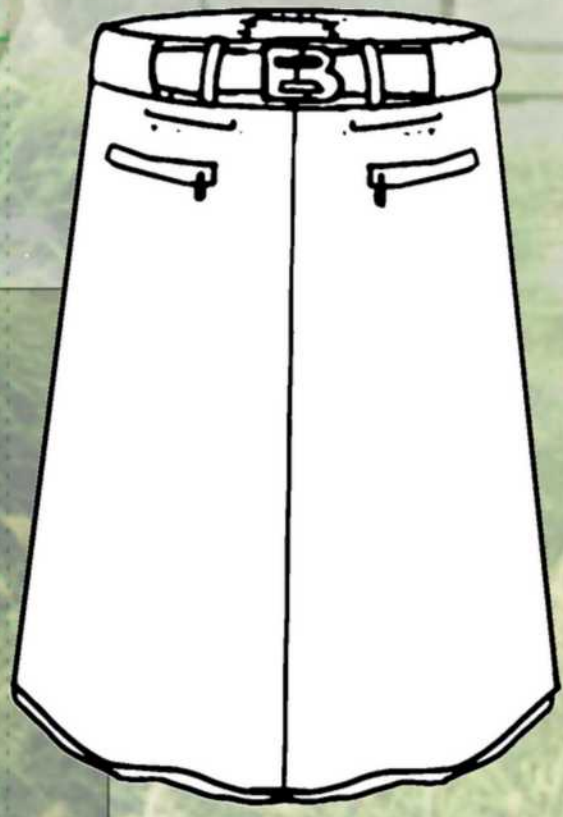
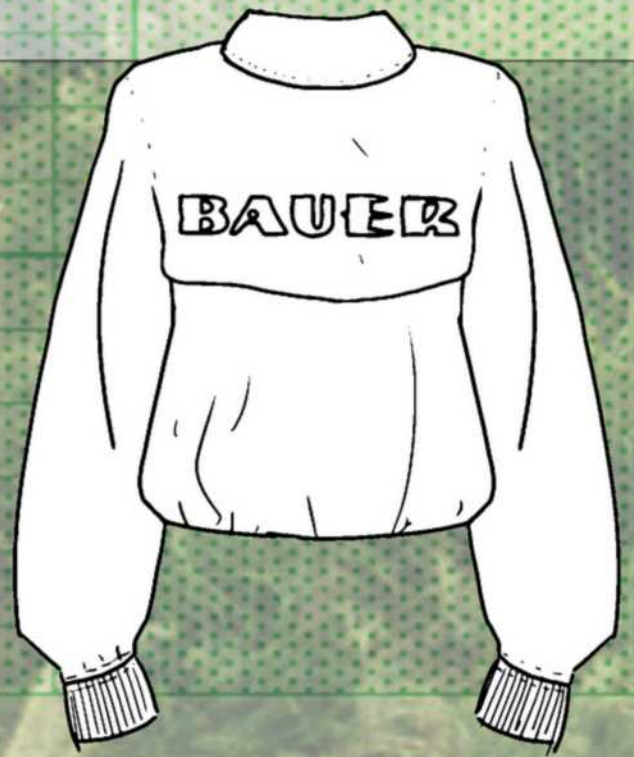
**Pieces inspired by archival Eddie Bauer involve referencing the iconic diamond puffer quilting from the Skyliner jacket while also incorporating silhouettes brought back to life. Using cutouts that resemble past motifs and iconic symbolism to the brand such as a mountain range can tie in old design to the future.**

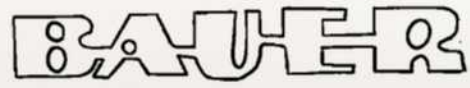




PRODUCTION SPEC SHEET		SEASON: Fall/Winter 2025						
REFERENCE #:	Jacket	DESCRIPTION:						
STYLE #:	EBEXP01	SIZE RANGE: XS-3X						
SAMPLE TYPE:	PRODUCTION	SAMPLE SIZE: M						
POM (Points of Measure)		XS	S	M	L	XL	2X	3X
Shoulder Forward	13.5"	14.5"	16"	17"	18"	20"	20"	20"
Shoulder Slope	14"	16"	19"	19.25"	20"	23"	23"	24"
Front Length from HPS (High Point Shoulder)	25"	28"	30"	31"	33"	33"	35"	35"
Bust at 1" below Armhole	31"	33"	34.5"	36"	38"	38"	40"	40"
Across Shoulder	20"	22"	23"	23"	25"	25"	27"	27"
Across Back at 5 1/2" below HPS	24"	25.5"	26"	27"	27"	27"	29"	29"
Across Front at 5" below HPS	18"	20"	22"	22"	22"	24"	24"	24"
Waist Placement	13" from HPS	15" from HPS	15.75" from HPS	18" from HPS	18" from HPS	20" from HPS	22" from HPS	22" from HPS
Waist Circumference	39"	41"	45"	46"	46"	48"	50"	50"
High Hip at 20 1/2" below HPS *Include Shoulder Forward	40"	41"	45"	46"	46"	48"	50"	50"
Low Hip at 24 1/2" below HPS *Include Shoulder Forward	40"	42"	45"	47"	47"	50"	52"	52"
Bottom Opening	35"	37"	39"	40"	40"	42"	44"	44"
Sleeve Length from Center Back	26"	27.5"	29"	31"	31"	33"	35"	35"
Muscle at 1" below AH	18"	20"	20"	22"	22"	26"	26"	26"
Elbow	8.5"	9.25"	10"	10"	10"	14"	14"	14"
Armhole Circumference	26"	28"	28"	28"	28"	30"	32"	32"
Armhole Straight	10"	11.5"	12"	12.75"	12.75"	14"	15"	15"
Sleeve Opening	20"	22"	24"	25"	25"	26"	28.5"	28.5"
Cuff Height	2.5"	3"	3"	3.75"	3.75"	4"	4"	4"
Cuff Opening (Without Elastic)	9"	10"	12"	12"	12"	13"	13"	13"
Collar Height	2"	2.5"	3"	3.25"	3.25"	3.25"	3.5"	3.5"
Collar Stand	.75"	.75"	1"	1"	1"	1"	1.5"	1.5"
Collar Point	3"	3"	4"	4"	4"	6"	6"	6"
Center Front Zipper Length	23"	25"	27"	28"	28"	33"	33"	33"
Pocket Zipper Length	5"	5"	6.5"	6.5"	6.5"	8"	9"	9"
Pocket Placement from HPS *Include Shoulder Forward	13"	13"	15.5"	16"	16"	20"	20"	20"
Pocket Length	.5"	.5"	.75"	.75"	.75"	.75"	1"	1"
Pocket Height	6"	6"	6.25"	6.25"	6.25"	7.5"	7.5"	7.5"
Hood Height	N/A	N/A	N/A	N/A	N/A	N/A	N/A	N/A
Hood Width	N/A	N/A	N/A	N/A	N/A	N/A	N/A	N/A
Belt Length	N/A	N/A	N/A	N/A	N/A	N/A	N/A	N/A
Belt Width	N/A	N/A	N/A	N/A	N/A	N/A	N/A	N/A
Front Neck Drop from HPS *Include Shoulder Forward	1"	1.5"	2"	2"	2"	2"	2.5"	2.5"
Back Neck Drop from HPS *Include Shoulder Forward	.5"	.5"	.5"	.5"	.5"	.5"	.75"	.75"
Neck Width	8"	9"	9"	9.5"	9.5"	11.5"	11.75"	11.75"

PRODUCTION SPEC SHEET		SEASON: Fall/Winter 2025			
REFERENCE #:	Midi Skirt	DESCRIPTION:			
STYLE #:	EBEXP01	SIZE RANGE: XS-3X			
SAMPLE TYPE:	PRODUCTION	SAMPLE SIZE: M			
POM (Points of Measure)		XS	S	M	L
Front Length from Waistband Top Edge	18.25"	19.5"	20"	20.25"	20.25"
Waistband Height	2"	2.5"	2.5"	2.5"	2.5"
Waist Circumference	22.5"	27"	29"	31"	31"
Hip 4" Below Top Edge	30"	31"	32"	34"	34"
Hip 8" Below Top Edge	33"	37"	39"	41"	41"
Sweep (Straight)	22"	22"	24"	26"	26"
Belt Loop Length	2"	2.5"	2.5"	2.5"	2.5"
Belt Loop With	.25"	.25"	.25"	.25"	.25"
Zipper Length	9"	10"	12"	12"	12"
Coin Pkt Opening	2"	2"	2"	3"	3"
Coin Pkt Below Waistband	1"	1"	1"	1.25"	1.25"
Front Pkt Opening from Side Seam	2"	2"	3"	3"	3"
Front Pkt Below Waistband at Side Seam	3.5"	3.5"	4"	4"	4"
Welt Pkt Length	5.75"	5.75"	6"	6"	6"
Welt Pkt Height	1.5"	2"	2"	2"	2"
Welt Pkt Center from CB	4.5"	4.5"	5"	5.5"	5.5"
Slit Length in Back	3"	3"	4"	4"	4"
<b>LINING:</b>					
Waist Circumference	22.5"	27"	29"	31"	31"
Hip 4" Below Top Edge	29.875"	30.875"	31.875"	33.875"	33.875"
Hip 8" Below Top Edge	32.875"	36.875"	38.875"	40.875"	40.875"
Sweep- (Straight)	21.75"	21.75"	23.75"	25.75"	25.75"








**PRODUCTION SPEC SHEET**

**SEASON:** Fall/Winter 2025

<b>REFERENCE #:</b>	Jacket	<b>DESCRIPTION:</b>	
<b>STYLE #:</b>	EBEXP01	<b>SIZE RANGE:</b>	XS-3X
<b>SAMPLE TYPE:</b>	PRODUCTION	<b>SAMPLE SIZE:</b>	M

REF	FABRIC QUALITY /CONTENT			
<b>A</b>	100% Upcycled Coated Cotton Canvas			
<b>B</b>	100% Upcycled Polyester Lining			
				
	<b>PLACEMENT OF MATERIALS</b>	<b>COLORWAY #1</b>	<b>COLORWAY#2</b>	<b>COLORWAY #3</b>
	A- Main Fabric, Logo Fabric	Light Gray (printed)	Lavender	Yellow-Green
	B- Lining Fabric and Pocket Bags	Light Gray	Lavender	Yellow-Green

ITEM	TYPE	DESCRIPTION/CONTENT	WIDTH/SIZE	QUANTITY	PLACEMENT
<b>SELF</b>	<b>RECYCLED COTTON CANVAS</b>	COATED COTTON CANVAS FROM TENTS	AS PER REQUIREMENT	3.5 yds.	MAIN BODY
<b>LINING</b>	<b>RECYCLED POLYESTER LINING</b>	100% RESPUN POLYESTER LINING	44"	4 yds.	MAIN BODY, POCCKET BAG AND TRIM
<b>TRIM</b>	ZIPPER, POCKET TRIM, LOGO DETAILS	RECYCLED PLASTIC, 100% RECYCLED POLYESTER	SEE DESIGN DETAILS*	1	SEE DESIGN DETAILS*
<b>LABEL</b>	SIZE, CARE, BRAND, FABRIC	PRINTED BRANDED FABRIC	SEE HANG TAG LAYOUT*	SEE HANG TAG LAYOUT*	LEFT SIDE SEAM AND CENTER BACK WAISTBAND
<b>THREAD</b>	100% BIODEGRADABLE THREAD	100% BIODEGRADABLE THREAD	THREAD	AS PER REQUIREMENT	ALL SEAMS

**PRODUCTION SPEC SHEET**

**SEASON:** Fall/Winter 2025

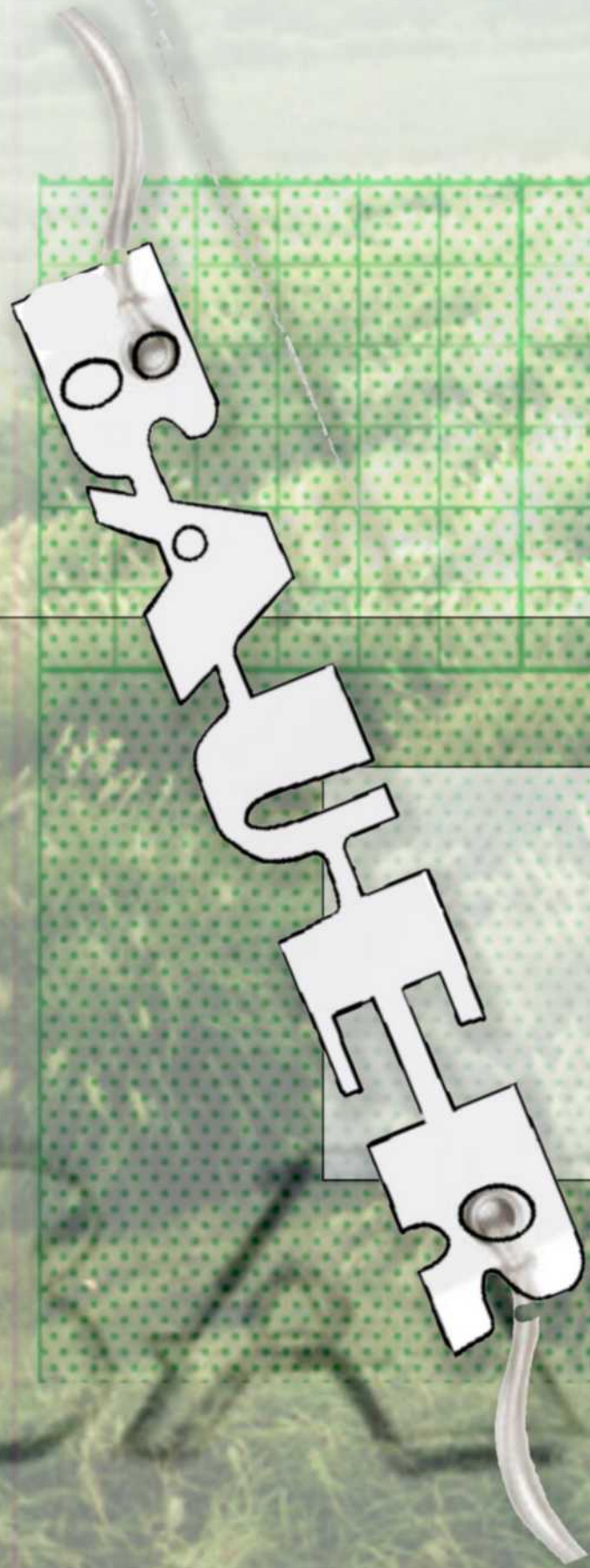


<b>REFERENCE #:</b>	Midi Skirt	<b>DESCRIPTION:</b>	
<b>STYLE #:</b>	EBEXP01	<b>SIZE RANGE:</b>	XS-3X
<b>SAMPLE TYPE:</b>	PRODUCTION	<b>SAMPLE SIZE:</b>	M

REF	FABRIC QUALITY /CONTENT			
A	100% Bio-Nylon Ripstop			
B	100% Upcycled Polyester Lining			
	<b>PLACEMENT OF MATERIALS</b>	<b>COLORWAY #1</b>	<b>COLORWAY#2</b>	<b>COLORWAY #3</b>
	A- Main Fabric, Waistband, and Belt Loops	Brown, Gray	Blue (printed), Blue, Light Gray	Gray (Printed), gray
	B- Lining Fabric and Pocket Bags	Gray	Light Gray	Gray

ITEM	TYPE	DESCRIPTION/CONTENT	WIDTH/SIZE	QUANTITY	PLACEMENT
<b>SELF</b>	<b>BIO-NYLON RIPSTOP</b>	100% BIODEGRADABLE NYLON	60"	1.5 yds.	MAIN BODY
<b>LINING</b>	<b>RECYCLED POLYESTER LINING</b>	100% RESPUN POLYESTER LINING	44"	2 yds.	MAIN BODY, POCCKET BAG AND TRIM
<b>TRIM</b>	<b>BELT BUCKLE, ZIPPER, BELT, HEM TRIM</b>	RECYCLED PLASTIC, CANVAS, 100% RECYCLED POLYESTER	SEE DESIGN DETAILS*	1	SEE DESIGN DETAILS*
<b>LABEL</b>	<b>SIZE, CARE, BRAND, FABRIC</b>	PRINTED BRANDED FABRIC	SEE HANG TAG LAYOUT*	SEE HANG TAG LAYOUT*	LEFT SIDE SEAM AND CENTER BACK WAISTBAND
<b>THREAD</b>	<b>100% BIODEGRADABLE THREAD</b>	100% BIODEGRADABLE THREAD	<b>THREAD</b>	AS PER REQUIREMENT	ALL SEAMS

# HANG TAG DESIGN



# WORKS CITED

279735451\_298850439091175\_8221926184796653759\_n.Jpg?Stp=Dst-jpg\_e35\_p1080x1080-\_nc\_ht=Scontent-vie1-1.Cdninstagram.com-\_nc\_c...  
<https://www.are.na/block/16332934>. Accessed 17 Oct. 2022.

ACG AD. <https://www.are.na/block/14041707>. Accessed 17 Oct. 2022.

Basket. <https://www.are.na/block/13917980>. Accessed 17 Oct. 2022.

(3) Cumbers, John. "Bio-Nylon Is the New Green: How One Company Is Fermenting a \$10 Billion Market." *Forbes*, *Forbes Magazine*, 12 Feb. 2020, <https://www.forbes.com/sites/johncumbers/2020/02/11/bio-nylon-is-the-new-green-how-one-company-is-fermenting-your-future-materials/?sh=673f4c8f4030>.

(5) Home - Fashion Futures 2030, 26 May 2019, <https://www.fashionfutures2030.com/>.

Mountain Climb . <https://www.are.na/block/13902154>.

Nara, Yohshitomo. Before Mowing the Pasteur, Rain Made Strange Landscape. <https://www.instagram.com/michinara3/>. Accessed 17 Oct. 2022.

(4) "Together, We Create Tomorrow." WGSN, <https://www.wgsn.com/en>.

(2) "Welcome to WGSN Edu." Educational Institutions, <https://www.wgsn.com/accounts/edu/>.

(1) WWW-WGSN-Com.eu1.Proxy.openathens.net. <https://www-wgsn-com.eu1.proxy.openathens.net/fashion/article/90631>.

Yellow Coat Green Skirt. <https://www.are.na/block/15938436>. Accessed 17 Oct. 2022.